



YOUR NEIGHBOURHOOD, YOUR SAY
HURLEY AND THE WALTHAMS NEIGHBOURHOOD PLAN

2015 - 2030
HURLEY & THE WALTHAMS

REFERENDUM PLAN



***Published by the Hurley & The Walthams Neighbourhood Plan Steering Group
on behalf of Hurley, Waltham St Lawrence, White Waltham Parish Councils
and Shottesbrooke Parish Meeting.***

June 2017

All maps produced by the Royal Borough of Windsor and Maidenhead 100018817, Contains Ordnance Survey data © Crown copyright and database right 2015.

CONTENTS

LIST OF LAND USE POLICIES	1
FOREWORD FROM THE CHAIR	2
1. INTRODUCTION AND PURPOSE	3
2. VISION AND OBJECTIVES	10
3. LAND USE PLANNING POLICIES	11
4. IMPLEMENTATION	28
5. POLICIES MAPS	29
6. SETTLEMENT BOUNDARY MAPS	34
ACKNOWLEDGEMENTS	38

APPENDICES:

- 1. Areas of Special Character Study**
- 2. Community Facilities Descriptions**
- 3. Local Green Space Justifications**

List of Land Use Policies

Environment:

ENV 1 – Sustainable Development

ENV 2 – Climate Change, Flood and Water Management

Spatial Policies:

Hurley:

HUR1 – Housing Schemes in Hurley

White Waltham:

WW1 – Housing at Grove Park

WW2 – Housing at Smithfield Road

WW3 – White Waltham Airfield

General Policies:

Gen1 – Rural Exception Sites

Gen2 – Quality Design

Gen3 – Areas of Special Character

Gen4 – Local Employment Sites

Gen5 – Community Facilities

Gen6 – Education

Gen7 – Local Green Spaces

Transport Policies

T1 – Accessibility and Highways safety

T2 – Goods Vehicle Traffic

Foreword from the Steering Group Chairman

As part of the government's 'Big Society' agenda local communities are being given the opportunity to develop a Neighbourhood Plan.

Although the Government's intention is for local people to decide what goes on in their Neighbourhood Plan area, the Localism Act 2011 sets out some important laws. One of these is that all Neighbourhood Plans must be in line with higher level planning policy. That is, Neighbourhood Plans must have regard to national policy and advice, and be in general conformity with local strategic policy.

In 2011 the parishes of Hurley, White Waltham, Waltham St Lawrence and Shottesbrooke were offered the opportunity to produce such a plan. This plan gives our community direct power to develop a shared vision for our neighbourhood and shape the development and growth for the next 15 years. The Plan can be reviewed in the future, to take account of changing circumstances.

Our focus has been to protect the Green Belt and ensure our Conservation Areas are preserved whilst looking at future housing needs in the Neighbourhood Plan area and maintaining and enhancing our environment. The Parish Councils have worked tirelessly to ensure they maintain and preserve the distinct atmosphere and environment of their villages whilst ensuring communities thrive.

Our Neighbourhood Plan area is 99% green belt and therefore largely constrained from new development by the NPPF and Borough Local Plan policies on green belt and in many areas, flood zones policies.

So many residents attended the consultation events and the response to our survey was indeed very high. Our grateful thanks to all our residents who participated in the consultation event and responded to the survey.

Our pre-submission consultation took place between December 2015 and March 2016 and we thank all of our residents, landowners and businesses that provided us with feedback on the Neighbourhood Plan policies.

The Hurley & the Walthams Neighbourhood Plan Steering Group has considered your feedback, and a full report on our consultation is available as a separate document.

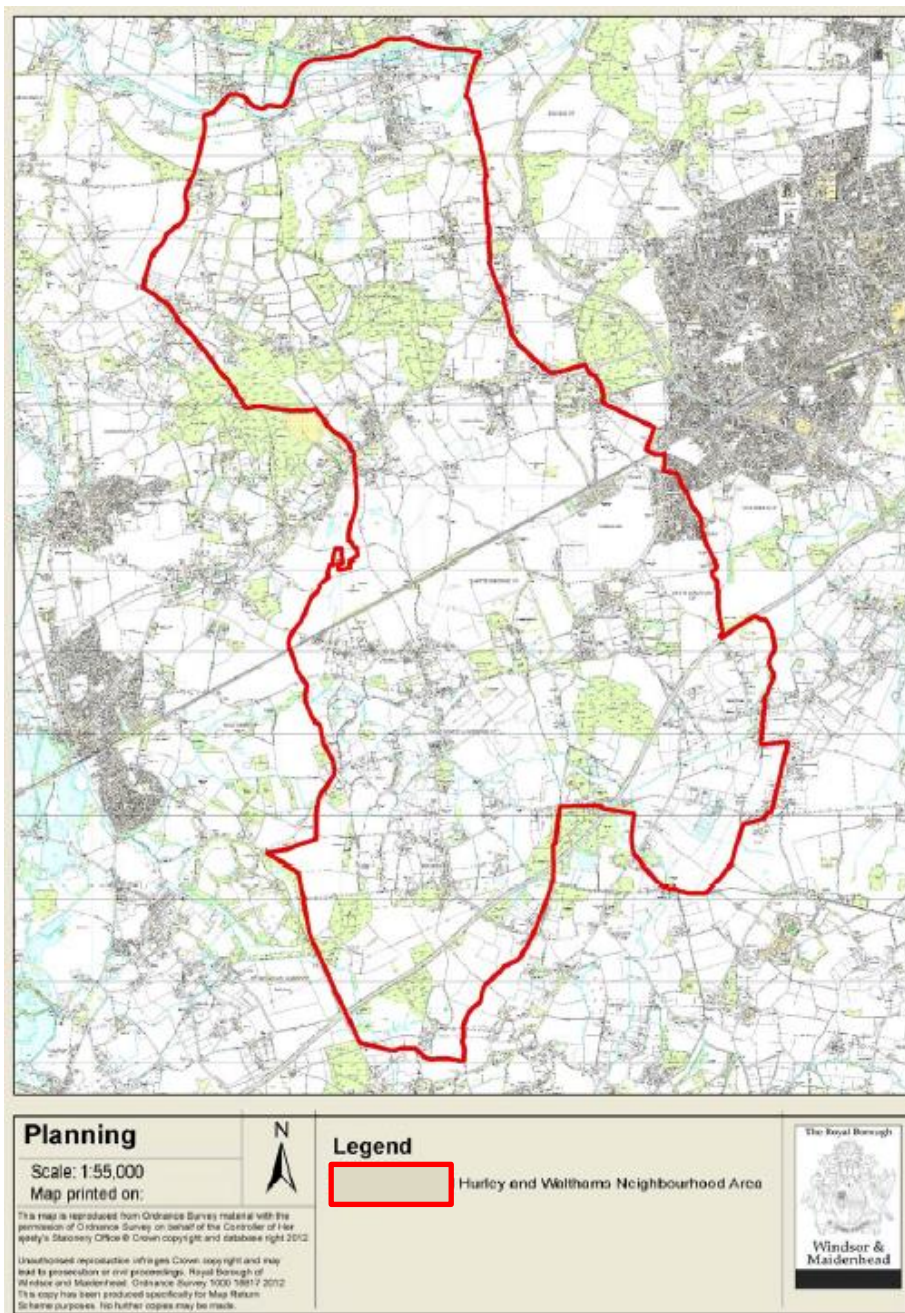
The Steering Group has now produced a final version of the Hurley and the Walthams Neighbourhood Plan to be submitted to the Royal Borough of Windsor and Maidenhead for review and for examination.

Maureen Hunt
Hurley and the Walthams Neighbourhood Plan Chairman

1. INTRODUCTION AND PURPOSE

The Hurley & the Walthams Neighbourhood Plan

1.1. The Parish Councils of Hurley, Waltham St Lawrence and White Waltham and the Parish Meeting of Shottesbrooke ("the Parish Councils") have jointly prepared this Neighbourhood Plan for the area designated by the Royal Borough of Windsor and Maidenhead under the provisions of the Localism Act 2011 and the Neighbourhood Planning (General) Regulations 2012. The designated area is shown in Plan A below.



Plan A: Hurley & The Walthams Designated Neighbourhood Area

1.2. The purpose of the Neighbourhood Plan is to make planning policies that can be used to determine planning applications in the area.

1.3. Neighbourhood Plans provide local communities with the chance to shape the future development of their areas. Once approved at a referendum, the Plan becomes a statutory part of the development plan for the area and will carry significant weight in how planning applications are decided. Plans must therefore contain only land use planning policies that can be used for this purpose. This often means that there are important issues of interest to the local community that cannot be addressed in a Plan if they are not directly related to planning.

1.4. Although there is considerable scope for the local community to decide on its planning policies, Plans must meet four 'basic conditions'. These are:

- Does the Plan have regard to national policy and advice?
- Is the Plan in general conformity with the strategic policies of the local development plan?
- Does the plan contribute to the achievement of sustainable development?
- Does the plan meet European obligations and environmental requirements?

1.5. In addition, the Parish Councils must be able to show that they have properly consulted local people and other relevant organisations during the process of making the Plan and have followed the Regulations.

Hurley & The Walthams – the place

1.6. The Hurley and the Walthams Neighbourhood Plan Group (HWNP) was constituted in 2011 for the purpose of preparing a neighbourhood development plan that sets out the spacial vision for the parishes of Hurley, Shottesbrooke, Waltham St Lawrence and White Waltham, for the next 15 years.

1.7. The HWNP was instigated as a 'front-runner' group by the Royal Borough of Windsor and Maidenhead. The HWNP comprises an entire ward area of the RBWM, rather than a single parish area.

1.8. An initial workshop was held at the Berkshire College of Agriculture in February 2011. A registry of interest was formed of members from the 3 parish councils and the parish meeting and included members of the village associations and other local interest groups. This was the basis for the creation of the Steering Group and topic groups of the HWNP.

1.9. The HWNP Steering Group comprises a Chairman, Maureen Hunt, and representatives from all of the constituent Parish Councils and Shottesbrooke Parish Meeting as well as representatives from local interest groups and organisations such as village associations, local historians and the Rural Housing Enabler for Berkshire from the Community Council of Berkshire.

1.10. The plan has had the support of a raft of local volunteers during its formulation. Apart from our dedicated Steering Group and Task Group Members, we have benefited at various times from local volunteers who have provided expertise in project management, public relations, media communications, survey analysis, research, marketing expertise and design consultants. Five separate topic groups

were formed to explore specific themes that are covered in the plan: Housing, Transport, Environment, Community and Business.

1.11. In 2012, a resident professional project manager volunteered his services and produced a Project Plan for delivery. This helped the group to focus its efforts, which resulted in 8 very successful consultation events and the household survey that took place in 2012-13. The Plan was delayed while the group re-examined its relationship with the RBWM Local Plan and considered the implications of Green Belt constraints on the possible achievable objectives of the Neighbourhood Plan.

1.12. Then, in September 2014, HWNP appointed rCOH to act as the Planning Consultants to provide the technical planning expertise that would enable the production of this plan. A visioning workshop was held in October 2014, with the result that the Steering Group created the Pre-submission Plan which was sent out for consultation in December 2015 through to 18th March 2016.

1.13. The Consultation Report that accompanies this Plan contains full details of the consultation activity undertaken and response to feedback that was considered in order to arrive at the policies in this plan.

Character of the Area

1.14. The whole of the Hurley & the Walthams Neighbourhood Plan area is characterised by its close proximity to London via rail links at Maidenhead and Twyford, access to the M4 and M40 motorways. The area is only half an hour from Heathrow Airport. That said, Hurley and the Walthams is the most rural ward in RBWM and is more than 99% Green Belt. The area includes a significant network of footpaths, cycle paths and bridleways through countryside and woodland. For all of these reasons, it is a desirable area to live in and house prices are high.

1.15. There is limited public transport and no train station located in the area. There is also no permanent post office in the area, although there are satellite services in Hurley Village and Waltham St Lawrence. There is a fixed doctors' surgery in Woodlands Park and a visiting service 2-3 times a week in Waltham St Lawrence, Knowl Hill and Hurley.

1.16. It is useful to review a little background on the character of each parish before reading the data summary. All of the parishes are rural in nature and by definition.

Hurley

1.17. Hurley is geographically a large parish characterised by 6 separate areas: Hurley village, Warren Row (hamlet) parts of Burchetts Green, Littlewick Green, Knowl Hill, and Cockpole Green. These areas are distinct in character and do not necessarily relate to each other as a single unit apart from through a united parish council. There is little or no public transport between the hamlets, and no single centre that would attract residents as a hub for shopping, community etc.

1.18. However it is important to identify key characteristics of the villages:

- Hurley village is characterised by its proximity to the River Thames, which provides significant leisure and tourist attraction to the area. However the

river also forms a natural boundary and includes extensive flood plain that affects the development potential of the area.

- Given the river and lock location, Hurley has many beautiful well used footpaths including the Thames Path.
- Hurley has several popular holiday caravan parks, and a permanent residential park at Frogmill Spinney.
- Hurley village is bounded by the A4130 Henley Road, which is a major transport link between Henley, Maidenhead, and the north Wokingham parishes, as well as the A404M, M4 and M40. To the south of this road are sweeping vistas of green fields, agricultural and equestrian land and woodland. To the north, across the River Thames is the chalk escarpment at the edge of the Chilterns.
- The village is well served with public houses and other amenities that villagers wish to see preserved for the future.
- All of the Hurley areas are in the Green Belt.
- There is a substantial office development at Horizon (formerly Prospect Park), on land south of the A4130
- Warren Row is a hamlet characterised by ancient woodland and equestrian enterprises.
- Park House is a disused factory complex that has received planning permission for 7 houses.
- Littlewick Green is divided between Hurley and White Waltham parishes.
- Knowl Hill is a settlement along the A4 with a village shop on Choseley Road, and a number of other businesses and amenities. Star Lane marks the Borough boundary between RBWM and Wokingham, with the Grundons landfill site entirely contained in Wokingham, but with sole access from Star Lane, which is in the parish. The site is identified as a potential future development location for Wokingham Borough Council.
- Burchetts Green is a small settlement characterised by woodland and proximity to the Berkshire College of Agriculture. The main route through the village is a declassified rural village road that utilises traffic calming measures to discourage heavy use.
- To the south of the A4130 there is an area of outstanding landscape value.

Shottesbrooke

1.19. Shottesbrooke is a historic hamlet characterised by a single large estate, Shottesbrooke Park and an important 14th century church. The area is largely agricultural with some significant woodland. The entire area is Green Belt. It does not have a Parish Council, but instead has a Parish Meeting based on its small size of approximately 155 people living in fewer than 60 households.

Waltham St Lawrence (WSL)

1.20. Possibly the most rural in character of the parishes, WSL comprises 3 distinct areas: Waltham St Lawrence, West End and Shurlock Row, also encompassing Beenhams and Billingbear. WSL is largely agricultural and wooded, and includes several equestrian enterprises. There is limited social housing with few services beyond two popular public houses. WSL has a considerable area designated as Flood Zone 3 that is inappropriate for development. The parish includes 3 conservation areas, two of which contain many listed buildings of significant historic interest.

1.21. In many respects residents relate more closely to Twyford and Wokingham than they do to Maidenhead and Windsor, and the village shops in Hurst and Twyford provide the nearest amenities.

White Waltham

1.22. The largest of the parishes in population terms, White Waltham is divided into distinct areas, White Waltham and Woodlands Park and a number of smaller hamlets namely part of Littlewick Green, and Paley Street. White Waltham village and Littlewick Green village contain conservation areas of considerable architectural value.

1.23. Between the villages of White Waltham and Woodlands Park the parish is home to Europe's largest grass runway airfield at West London Aero Club. As well as providing valuable leisure activity it is also a huge open green space that characterises this part of the parish. It is a key restrictor on further increases to the parish's rural population density which could potentially extend from the Woodlands Park settlement area.

1.24. Woodlands Park has a character very different from the rest of the Neighbourhood Plan area as it is the only part of the NP that is not in the Green Belt, therefore is the most densely populated and developed but also the most susceptible to further development. It is only 0.62% of the geographic area of HWNP but houses 24.75 % of its population. It is often mistaken as being part of Cox Green or Maidenhead, however local residents want to preserve its identity as a rural village and part of the wider parish of White Waltham. It has a thriving Community Centre located on the perimeter of the settlement between Woodlands Park and White Waltham Village and offering a wide range of services to the community.

1.25. It features some significant business park areas, some of which may be open for redevelopment. However there is little available in terms of local retail or amenities for local residents. There are shops, a take-away, chemist and a surgery.

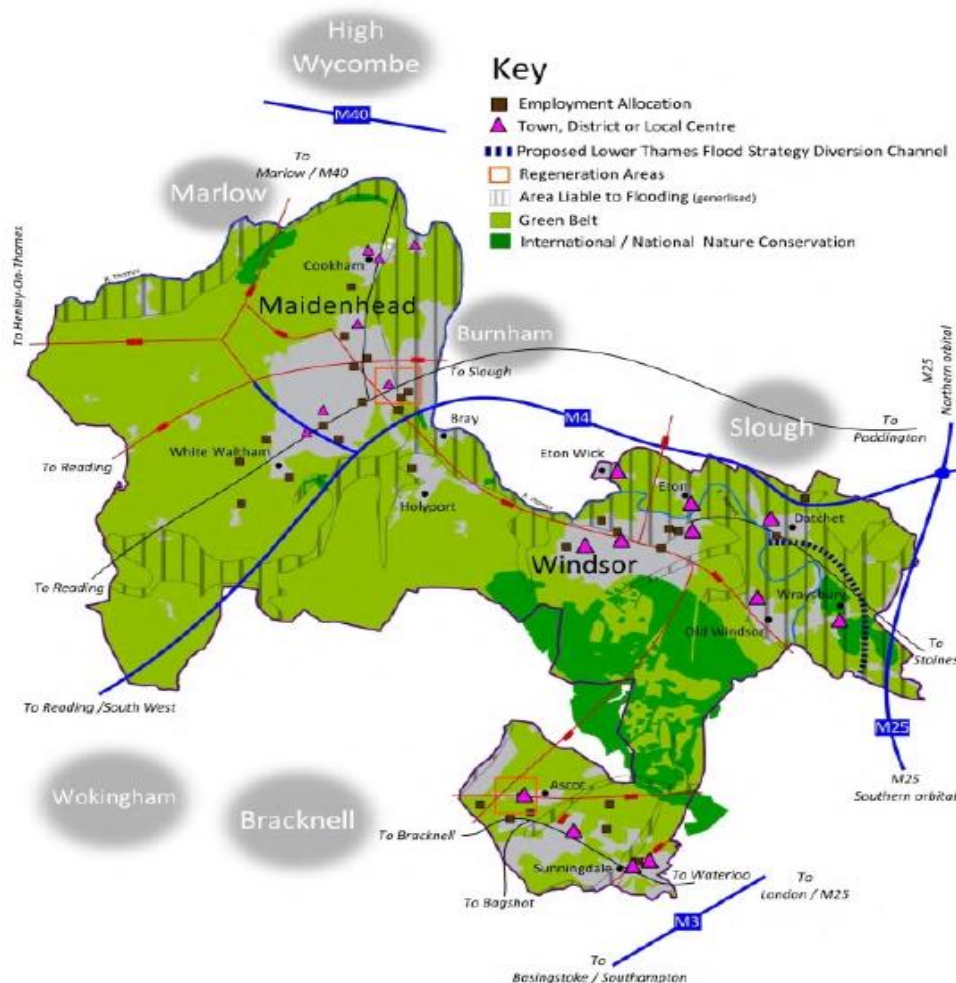
1.26. The roads through the parish experience heavy traffic as a result of proximity to Maidenhead and access to the M4, A404M and Maidenhead Rail Station. As well as having to bear the brunt of heavy traffic from local businesses including large-lorry traffic and parking.

The Planning Policy Context

1.27. The Neighbourhood Plan must be in line with national and local planning policies. The National Planning Policy Framework (NPPF) and Planning Practice Guidance set out national planning policy and advice. These documents set out the key planning principles that apply to preparing plans and managing development proposals across the country.

1.28. At the local level, the key document is the Royal Borough of Windsor and Maidenhead Local Plan adopted in 2003. It contains a variety of strategic policies to guide the policies of the Neighbourhood Plan. Given its age, the Royal Borough is preparing a replacement Borough Local Plan. This new Plan will take forward many of those strategic policies from 2003 but, importantly, it will also provide an up-to-date housing supply strategy for the period from 2011 to 2030.

1.29. A 'preferred options' version of the Borough Local Plan was published for public consultation in January 2014. This is the latest published version and has therefore been used to inform the Neighbourhood Plan. However, the Royal Borough indicated in February 2015 that a second preferred options version of the Borough Local Plan will be published for further consultations in summer 2015. Importantly, it proposes not to proceed with any Green Belt land releases in the Hurley & Walthams Neighbourhood Area but rather to focus on the major urban areas of the borough and only established sites in the Green Belt for housing growth in the plan period.



Community Views on Planning Issues

1.30. The HWNP Steering Group consists of a large and representative group of committed volunteers from the area, including Parish Council members, Village Association members and other dedicated local residents. Members have had consistent input into the plan since the Steering Group was constituted in 2011. A project plan was agreed in May 2012.

1.31. The HWNP website, www.hurleyandthewalthams.org.uk was created in 2011 and is maintained on a regular basis with updated information on progress and consultation activities.

1.32. The Steering Group meets regularly as required. There are 5 topic task groups, each chaired by a Steering Group member:

- Housing
- Environment
- Transport
- Community
- Business

1.33. The Chairman writes progress updates to local parish magazines and press. She also attends parish council meetings and reports on HWNP progress, and provides updates at other local meetings as required. In October and November 2012 a series of 8 community consultation events were run across the neighbourhood plan area to launch the work of the group to the community at large and capture initial feedback. 449 people attended these events.

1.34. A household questionnaire was formulated using the feedback from the consultations to provide an opportunity for all area residents to input their views. The survey was delivered to all households in the area (2,500) in November 2013. There were 784 responses (31%). The report can be viewed on the HWNP website. All three of the Parish Councils (but not Shottesbrooke Parish Meeting) have undertaken rural housing need surveys to identify local affordable housing needs. The Steering Group and 5 Task groups have met independently with local businesses, landowners, schools and other community organisations to get additional feedback for this plan.

1.35. The pre-submission version of the plan was issued for formal consultation from December 2015 until 18th March 2016. In addition to online and written feedback, two additional consultation events were held to give residents, landowners and businesses an opportunity to meet with the Steering Group and discuss the plan and provide feedback.

1.36. Full details of the Regulation 14 Consultation and the Steering Group response are set-out in the separate Consultation Report.

Sustainability Appraisal

1.37. The Royal Borough has determined that the Neighbourhood Plan does not require a Sustainability Appraisal under the Environmental Assessment of Plans and Programmes Regulations 2004. However, the submission documentation shows that

the policies contribute to the achievement of sustainable development, which is one of the basic conditions it must meet if it is to proceed to referendum in due course.

1.38. The Neighbourhood Plan website contains all the necessary background information on the Plan including an electronic copy of the Plan. Its web address is: www.hurleyandthewalthams.org.uk

2. VISION AND OBJECTIVES

Introduction

2.1 The Parish Councils have adopted a vision statement to describe how the Neighbourhood Plan area will appear in 2030.

Vision

“Hurley and the Walthams is an area of four parishes and comprises: 17 villages and hamlets, 7 conservation areas, 200 listed buildings, and approximately 145 public footpaths and bridle and cycle paths.

99% of the HWNP is located in the Metropolitan Green Belt and is further constrained by significant floodplains.

The HWNP recognises the growth pressures on the wider RBWM area as a result of economic growth, pressure from London and the potential of impact from Cross-rail due to open in 2017.

Due to the Green Belt and flood constraints the HWNP seeks to maintain the village nature and rural character of the area. By reason of the protection afforded by the Green Belt we are able to ensure that future development of the area is directed at supporting local housing and employment needs. In addition the HWNP contributes to the sustainability of the natural heritage of the area and provides for the wider Borough, through the provision of green spaces, public footpaths, cycle paths, and bridleways throughout our extensive countryside and woodlands.”

Objectives

- The continuation of the present Green Belt designation to preserve the special character of the villages and hamlets and their surrounding countryside.
- The protection of non-Green Belt areas from the pressures of further intensive development.
- The protection of the special historic and architectural character of the Conservation Areas and Listed Buildings that define many of the villages.
- The protection of valued community assets – village shops, village halls, schools.

- The retention and enhancement of local employment opportunities at the area's main business parks.
- The provision of new homes on small sites to meet the local need for housing; notably of older households wanting to downsize and of newly forming households from local families.
- The better management of traffic through the area resulting from the economic pull of London, Reading and Maidenhead, especially with regard to increases resulting from the opening of Crossrail and proximity to the M4 Motorway.

To this end, all of the policies included in this plan should take careful consideration of the additional impact on traffic flow through the area.

2.2 Decisions regarding the expenditure of the community element of any Community Infrastructure Levy that results from development in the plan area should be determined by the individual parish council where development takes place.

3. LAND USE PLANNING POLICIES

Policy Issues

3.1 The planning policy context and the community engagement work already undertaken have raised a number of issues for the Neighbourhood Plan to address:

- What sites are either available now or may become available for development in the plan period that the Plan should shape the principles of, if they are suited to development at all?
- Should the Plan seek to anticipate the Local Plan proposing site allocations in the parishes by having policies establishing their key development principles?
- What criteria would we use to determine appropriate rural exception sites?
- What are the design characteristics of the area that could be included in a policy?
- Can we define and justify designating areas of special character to ensure development in those areas will conserve their character?
- Is there a need for a local employment policy to refine the existing Local Plan protection policies?
- Which schools would benefit from a supportive policy allowing them to improve/expand their facilities?
- What community facilities would be on the list of those to be protected from a change of use?
- Which spaces meet the criteria for designation as Local Green Spaces?

3.2 These issues have been debated and the conclusions have informed the land use policies of this Pre Submission version of the Plan. These proposals for planning policies are set out in the next section.

Land Use Policies

3.3 Land use policies are used to determine planning applications made for development proposals. They can establish the principles for retaining or changing the use of land in settlements and in the countryside. They can also set out the conditions against which development proposals will be judged in terms of their design, access etc.

3.4 The purpose of these policies is to either encourage planning applications to be made for things the local community wants to see happen or to discourage applications for developments that they do not want to happen. Policies must be clearly written so they can be easily applied when considering planning applications.

3.5 The Plan deliberately avoids repeating existing national or local planning policies. The proposed policies therefore focus on a relatively small number of key development issues in the area.

3.6 Set out below are the proposed policies of the Plan. Each policy has a number and title and the policy itself is written in bold within a text box for ease of reference. There is also a short statement explaining the intention of the policy. The Policies Maps are contained at the end of the Neighbourhood Plan. Where a policy refers to a specific site or area, then it is shown on the main Policies Map and/or an inset map.

Env 1 - Sustainable Development

Development proposals should:

- i) respect the intrinsic character and beauty of the countryside and Parishes and the need to support thriving rural communities;***
- ii) maintain and where practicable and appropriate, enhance biodiversity; and***
- iii) not give rise to harmful disturbance from noise. The use of renewable and low-carbon or zero carbon technologies to reduce energy use will be supported.***

Env 2 – Climate Change, Flood and Water Management

Development must not increase flood risk elsewhere. The inclusion of Sustainable Drainage Systems as part of a new development will be supported.

3.7 Policy ENV1 recognises the importance of preserving the valuable natural assets of the area for the long-term benefits of future generations.

3.8 Policy Env 2 – recognises the high cost of climate change with particular regards to circumstances created in the Plan area by the extensive flood plain designations in Hurley and Waltham St Lawrence from river Thames and the Loddon, in addition to high Levels of ground water and poor access to drainage that has caused considerable flooding events in the recent past.

Policy HUR 1- Housing Schemes in Hurley

Development proposals for a single housing scheme at each of the Recognised Settlements in Hurley Parish will be supported, provided each scheme:

- i. lies within or adjoins the boundary of the Recognised Settlement;***
- ii. is for no more than five dwellings of 2 or 3 bedrooms only on land with a gross site area of no more than 0.25 Ha; and***
- iii. it will sustain the significance of any heritage assets, where relevant; and***
- iv. it will not otherwise compromise the permanent open character of the Green Belt.***

3.9 Policies HUR 1-3 guide future development in Hurley Parish. The policies indicate the general types of locations and circumstances that may be appropriate for new housing, which is consistent with 2003 Local Plan Policy GB3 .

3.10 Policy HUR1 is intended to be more permissive of certain types of housing development scheme in the Green Belt than Policy GB3 in order to deliver specific housing outcomes for Hurley Parish. The local community there is increasingly concerned that the consequence of Green Belt policy is a lack of available smaller homes in each of its Recognised Settlements to enable older residents to downsize. The Parish Council therefore considers there is a 'very special circumstance' to allow each settlement to accommodate one housing scheme within or adjoining its present boundary, in line with NPPF paragraph 87. According to Census 2011: 63.5% of people in Hurley live in households of 2 people or less.

3.11 The NPPF paragraph 89 identifies 'limited infilling' within Green Belt villages and 'limited affordable housing to meet local community needs' as being exceptions to inappropriate development in the Green Belt. By confining its support to one scheme in each settlement in the plan period and to each scheme being for no more than 5 dwellings on land of no more than 0.25 Ha in a location that does not undermine the permanent open character of the Green Belt, the policy has paid full regard to national policy in this respect. Although not confined to the planning definition of affordable housing, the policy has a very similar intent in addressing a local housing need.

Community Action:

Hurley Parish Council will seek to work with third parties, with the aim of ensuring that proposals related to Star Works in Wokingham demonstrate that their impacts on Hurley's highway network are satisfactorily mitigated.

3.12 Star Works is located within neighbouring Wokingham Borough Council but the road access is via Star Lane in Knowl Hill which lies within the Neighbourhood Area. In addition, the majority of the site is in minerals and waste use, which is 'excluded development', that cannot be controlled by a Neighbourhood Plan policy but there are other business uses on the site. Hurley Parish Council would like to ensure that any future proposals for additional business uses on the site take into account the cumulative impact of noise and heavy goods traffic movements on Star Lane and

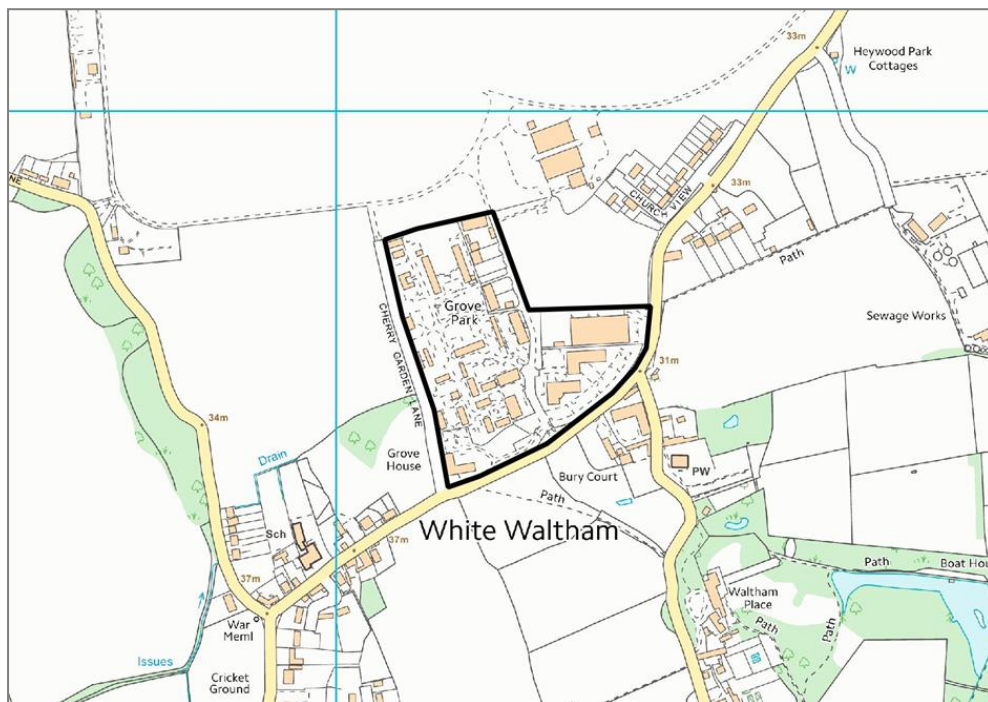
Policy WW 1 - Housing at Grove Park

Proposals for the redevelopment of Grove Park, to provide housing, will be supported, subject to:

- i) the majority of dwellings comprising smaller 2 and 3 bedroom houses of no more than two storeys in height;***
- ii) providing for a range of housing, including dwellings for downsizers and first time buyers;***
- iii) having a positive impact on local character; and***
- iv) ensuring safe and secure access onto Waltham Road.***

the local community at Knowl Hill.

3.13 Grove Park is an established business park. The policy seeks to guide how such a scheme could be made satisfactory by setting out its key development principles. The site occupies a prominent position in the landscape; the relationship between new housing and existing businesses is sensitive; and Waltham Road is a busy road in peak hours. All require careful consideration in the design of future proposals-

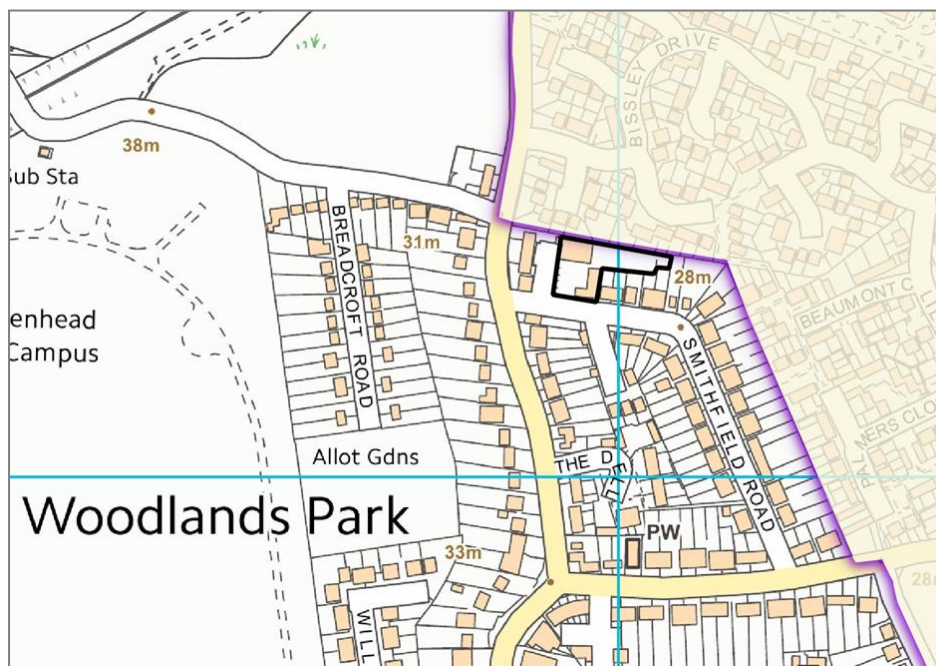


Policy WW1 Grove Park

Policy WW 2 - Housing at Smithfield Road, Woodlands Park

Proposals for the redevelopment of land at Smithfield Road, to provide housing, will be supported, subject to dwellings not being more than two storeys in height; maintaining a set back from Smithfield Road no less than that of neighbouring dwellings to the east; the provision of off-road parking spaces within the site; and the satisfactory resolution of any ground contamination issues.

3.14 The Smithfield Road site is currently in a single builders merchant yard use. Although that use has not formally been determined as 'unneighbourly' - and there is no proposal to force its relocation - the policy seeks to send a market signal to the land owner that a housing redevelopment scheme is acceptable in principle for the proper planning of the area.



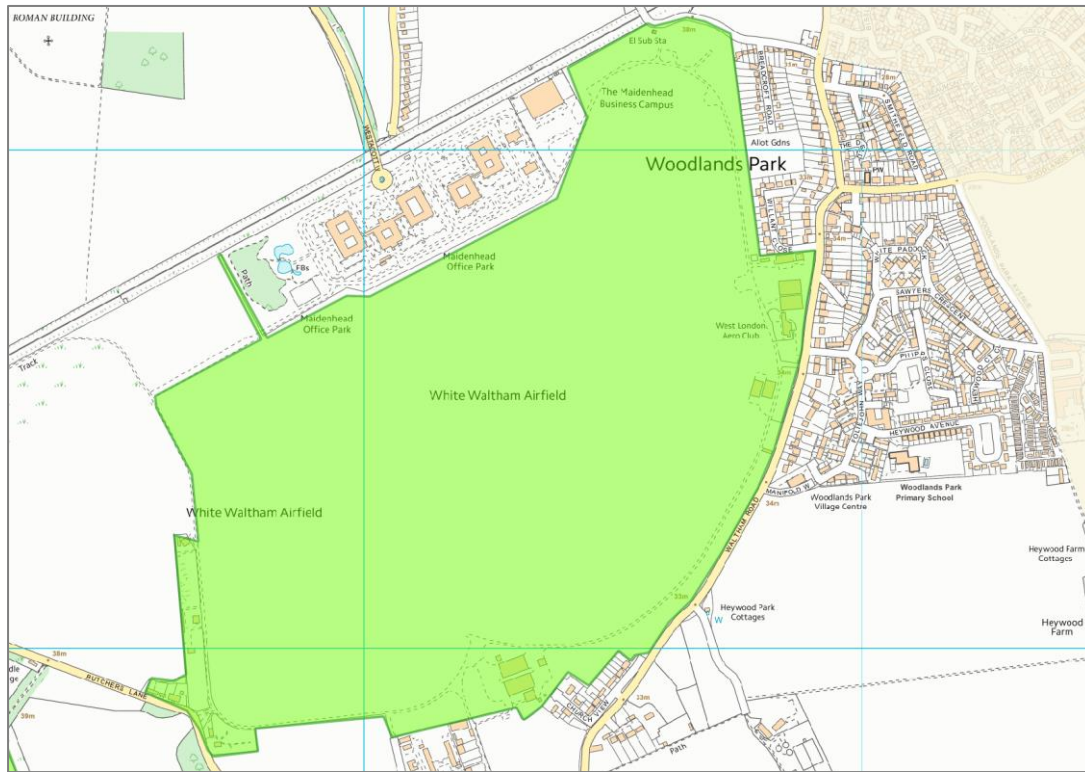
Map Policy WW2 Smithfield Road

Policy WW 3 – White Waltham Airfield

Proposals for development on the White Waltham Airfield, as shown on the Policies Map, will only be supported if they are ancillary to the established airfield use, conserve heritage assets and are appropriate in the Green Belt.

3.15 Policy WW3 addresses the future use of the Airfield. This use covers a large area of the Green Belt in the parish and adjoins part of Woodlands Park. It is a popular airfield with a series of buildings located on its edge, all serving a purpose directly associated with its use, e.g. navigation, servicing, storage. Some airfield development is deemed permitted by the GPDO 2015 but other proposals may

require planning consent, which this policy supports provided they remain ancillary to its primary purpose.



Map Policy WW3: White Waltham Airfield

General Policies: Gen Policies apply to all of the HWNP

Policy Gen 1: Rural Exception Sites

Proposals for small-scale affordable housing development that is within or well related to an existing settlement will be supported, provided:

- i. The homes on the scheme meet a demonstrable local need for affordable homes from people with a local connection to the parish within which the scheme is located, whereby need is demonstrated by an up to date Housing Need Study of that parish***
- ii. The scheme does not exceed 10 dwellings in total***
- iii. The scheme is designed to respect the characteristics of the local area including the countryside setting.***

The initial and future occupation of all affordable homes will be controlled by means of a Planning Obligation to ensure that each home remains as affordable housing for people with a local connection in perpetuity, whereby a local connection is defined by people with a demonstrable connection to the village thus:

- iv. The occupants currently live in the village and/or;***
- v. The occupants have immediate family in the village (immediate is Parents and or children); and/or***
- vi. The occupants are employed in the village and have been for a minimum of 3 years; and/or***
- vii. The occupants are employed as key workers in the village, i.e. teachers, care workers, nurses, firemen, police.***
- viii. Should future vacancies arise, the same criteria will be required. In the event that a vacancy arises in an affordable home and there is no household that meets the criteria of this policy, then the definition of local connection will be extended to the neighbouring parishes within Hurley and the Walthams designated neighbourhood area. In the event that there is no household from that extended area that meets the criteria of this policy, then the allocation may be made available to the Royal Borough General Housing Needs Register.***

Cross subsidy through the provision of open market housing on the scheme shall be allowed only where it ensures the delivery of the affordable housing and shall comprise the minimum number of open market dwellings necessary to ensure the delivery of affordable housing as part of the same development proposal, to be demonstrated by a viability appraisal of the full scheme.

3.16 This is a policy that allows for small schemes of only affordable housing adjoining the Recognised Settlements in the Green Belt. It indicates the general types of locations and the very special circumstances that may be appropriate for such sites, which is consistent with 2003 Local Plan Policy H4.

3.17 The Neighbourhood Plan area recognises that given the particularly high price of housing in the area, and the lack of development of smaller homes for starters and downsizing, local residents are being priced out of the market. There is a

confirmed need for affordable homes for local people identified in Housing Need Surveys conducted by the Rural Housing Enabler for Berkshire based at the Community Council for Berkshire across the 3 parished areas of the Neighbourhood Development Plan area.

3.18 Affordable Housing is defined by the NPPF as: "Social rented, affordable rented and intermediate housing, provided to eligible households whose needs are not met by the market. Eligibility is determined with regard to local incomes and local house prices."

3.19 Need may include existing residents of the parish or from adjoining parishes who require separate accommodation or are currently living in accommodation unsuited to their needs.

3.20 The policy seeks to permit in exceptional circumstances development within, adjacent to, or well related to existing settlement. This policy seeks to prevent development in the open countryside but where proposal is outside the settlement boundary 'Well-related' in this case means according to what has been determined acceptable by the Parish Council through public consultation.

3.21 This policy seeks to limit the size of any rural exception development based upon impact to the Green Belt and rural character of the HWNP as well as with regards to feedback from the vast majority of residents in the HWNP consultation that would find this threshold acceptable.

3.22 This policy is consistent with the National Planning Policy Framework that allows for limited open market development on rural exception sites, but seeks to clarify that this is only acceptable where the open market development is necessary to make the affordable units deliverable. With the high land values in this area it is unlikely a scheme will require more than 25% of open market units on the development.

Land Registry Average Sold House Values April 2015 – March 2016			
	HWNP Area	RBWM	England
All homes sold	£594,000	£424,877	£185,304
Semi detached properties only	£462,000	£398,616	£175,130
Lower Quartile average price	£276,000	*	*

3.23 This policy further seeks to set-out the legal framework for the control of occupancy of the affordable homes on any rural exception development in the HWNP.

Policy Gen 2: Quality Design

Development proposals, including alterations to existing buildings, will be supported within the context of all other policies, providing their scale, density, massing, height, landscape design, layout and materials, and new ground surfaces, reflect the architectural and historic character and scale of the buildings and landscape of the respective Parishes. Innovative design solutions that enhance the appearance of the street scene will be supported.

- i. Where appropriate, new developments should seek to reflect local materials and features evident in the immediate surrounding area,***
- ii. Materials used for paved surfaces should be appropriate to their immediate surroundings with a preference given to permeable surfaces.***

3.24 This is a design policy that requires all planning applications to respond to the common design characteristics of the area and specifically to the adopted Conservation Area Appraisals for proposals located within or adjoining one of the Conservation Areas in the area, line with Borough Local Plan Policy HOU8 and 2003 Local Plan Policies DG1 and H10.

Policy Gen 3: Areas of Special Character

The Neighbourhood Plan designates the following areas as Areas of Special Character, as shown on the Policies Map:

Hurley Parish:

- i. Warren Row***

Shottesbrooke Parish:

- ii. Shottesbrooke Park***

White Waltham Parish:

- iii. White Waltham Airfield***

Development proposals in a designated area should have regard to the desire to conserve and enhance the characteristics that define that area, as set out in the Neighbourhood Plan Areas of Special Character Study.

3.25 This policy designates Areas of Special Character in the HWNP area for the purpose of managing development proposals in those settlements to ensure their essential characteristics are maintained.

3.26 The design guidance for each Area, and the definition of their local architectural and historic character that justifies their designation, is contained in the Areas of Special Character Study in the evidence base.

Policy GEN 4: Local Employment Sites

With the exception of land at Grove Park (see Policy WW 1), proposals that result in the loss of an existing employment or business use, will be resisted, unless it can be demonstrated that its continued use is no longer viable.

Policy Gen 5: Community Facilities

Development proposals to provide new community facilities, or that will sustain or extend the following existing community facilities, will be supported:

Hurley Parish sites:

- i. Black Boys Public House, Hurley***
- ii. Doctors' Surgery, Hurley***
- iii. Village Hall, Hurley***
- iv. Hurley farm shop, Hurley***
- v. Rising Sun Public House, Hurley***
- vi. Old Bell complex, Hurley***
- vii. Royal Oak Public House, Knowl Hill***
- viii. Village Hall, Knowl Hill***
- ix. Doctors' Surgery, Knowl Hill***
- x. Choseley Road Stores, Knowl Hill***
- xi. St Peter's Church, Knowl Hill***
- xii. Public House, Warren Row (formerly Snooty Fox)***
- xiii. The Crown Public House, Burchetts Green***
- xiv. Dew Drop Inn Public House, Burchetts Green***

Waltham St Lawrence Parish sites:

- i. Neville Hall Village Hall, Milley Road Waltham St Lawrence***
- ii. Bell Inn, The Pound, Waltham St Lawrence***
- iii. Shurlock Inn, The Street, Shurlock Row***
- iv. Billingbear Park Public Golf Course, The Straight Mile, Wokingham***

White Waltham Parish sites:

- i. Holly Cottage and Parish Hall, White Waltham***
- ii. The Beehive Public House, White Waltham***
- iii. The Royal Oak Public House, Paley Street***
- iv. Bridge House Public House, Paley Street***
- v. The Cricketers Public House, Littlewick Green***
- vi. Woodlands Park Village Centre and Community Halls, Woodlands Park***
- vii. Woodlands Park Surgery, Woodlands Park***
- viii. Gilchrist Thomas Village Hall, Littlewick Green***

Proposals that will result in the loss, or significant reduction in the scale, of a community facility identified in this policy will be resisted, unless suitable alternative facilities are provided, or the existing community facility is demonstrated to be unviable in its current use.

This policy identifies those built community facilities that will be protected from a change of use that will result in a loss of their community value. Some may already have protection from demolition given they are designated heritage assets but this policy seeks to ensure their community value is sustained. Further, it encourages proposals to enable the facilities to remain viable community assets, in line with 2003 Local Plan Policy CF1.

3.27 Further, it encourages proposals to enable the facilities to remain viable community assets, in line with 2003 Local Plan Policy CF1. However, this cannot be at any cost, and so the policy confines proposals to those that are the minimum to maintain the viability of the facilities and that will not undermine the character of the Green Belt or harm local amenities.

Policy Gen 6: Education

Proposals to extend an existing education facility to provide for additional educational uses and/or to establish a nursery school/play group, will be supported, provided:

- i. the design of the scheme is proportionate to the site and will not compromise the permanent open character of the Green Belt;***
- ii. the scheme minimises the built up area of the education site by locating new buildings within or adjoining the existing building or cluster of buildings;***
- iii. the scheme will deliver the necessary supporting infrastructure, including car parking.***

Proposals that will result in the loss, or significant reduction in the scale, of an existing educational facility will be resisted, unless suitable alternative facilities are provided.

3.28 This is a policy that protects and supports the extension of existing education sites – the six primary schools and nursery schools in the parishes - to ensure they remain of a high standard and popular with local families and students respectively, subject to measures on parking and amenity for example, and is in line with 2003 Local Plan Policy CF1. The neighbourhood area is very rural and there is therefore a special value in retaining these facilities as part of the social fabric of the local communities.

Policy Gen 7: Local Green Spaces

The Neighbourhood Plan designates Local Green Spaces in the following locations, as shown, on the accompanying plans and further defined in the Appendix Local Green Spaces:

Hurley Parish sites:

- i. Knowl Hill Common***
- ii. Hurley village greens***
- iii. Hurley football pitch and playground***
- iv. Hurley cricket field***
- v. Cockpole Green village green***
- vi. Land opposite Knowl Hill Common, north on A4***

Waltham St Lawrence Parish sites:

- vii. Land adjacent to Pool Lane, Waltham St Lawrence***
- viii. Land behind Primary School, West End***
- ix. Land behind Bell Inn, Waltham St Lawrence***
- x. Land by Milley Bridge, Waltham St Lawrence***
- xi. Land at Yeo Memorial Cricket Ground, Shurlock Row***

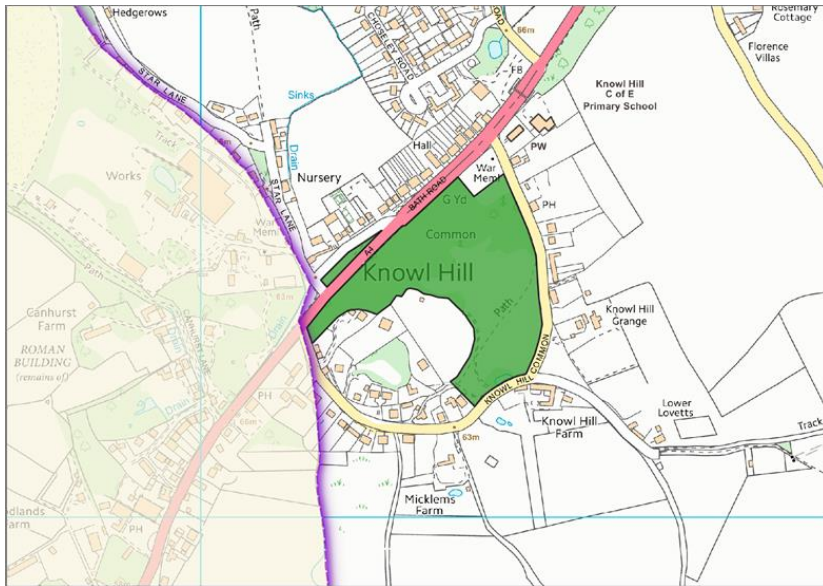
White Waltham Parish sites:

- xii. White Waltham Cricket Ground***
- xiii. Land off Breadcroft Lane; Woodlands Park***
- xiv. Village green and cricket ground, Littlewick Green***
- xv. Waltham Grove Park recreation ground, White Waltham***
- xvi. Phipps Close Play area, Woodlands Park***

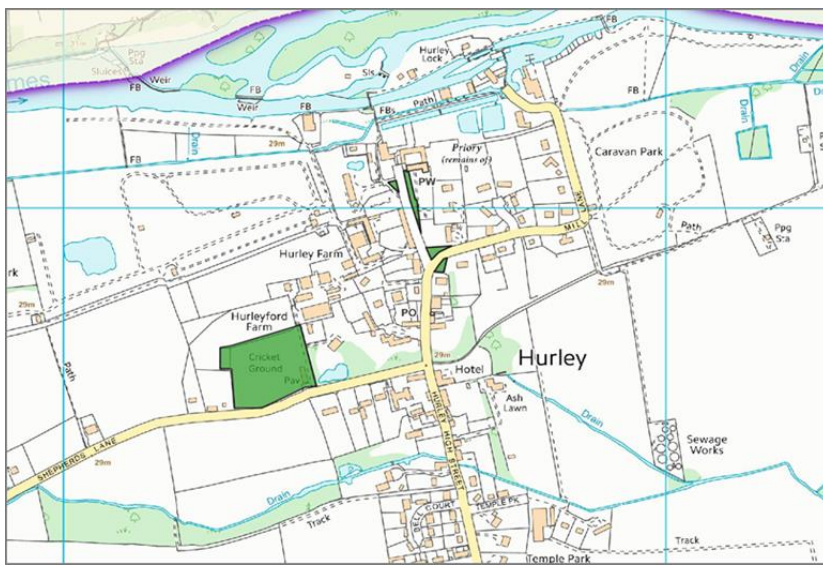
New development in a Local Green Space is ruled out other than in very special circumstances

3.29 This is a policy that designates Local Green Spaces to protect them from development for the plan period and beyond, as provided for by National Planning Policy Framework. To qualify as such, each site meets the criteria set out in para 77 of the NPPF as set out in Local Green Space Study in the evidence base.

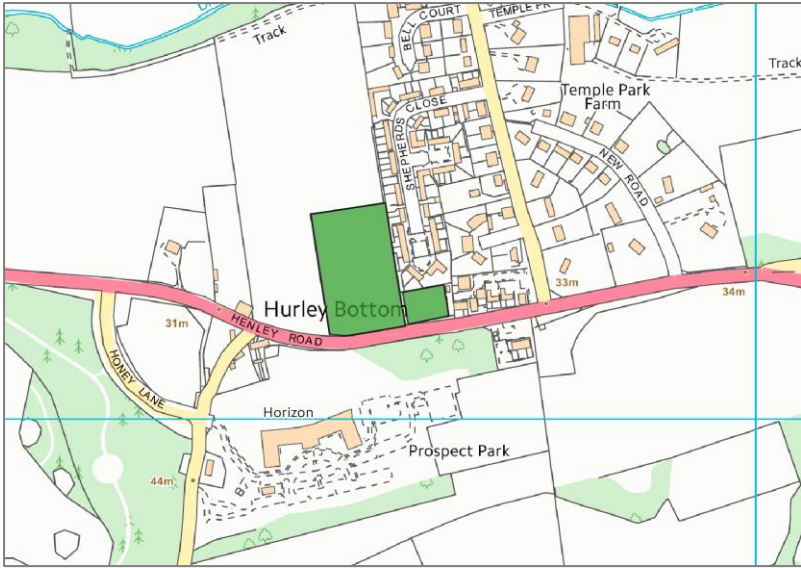
Local Green Space Plans:



Map: Knowl Hill Common and Land North of A4



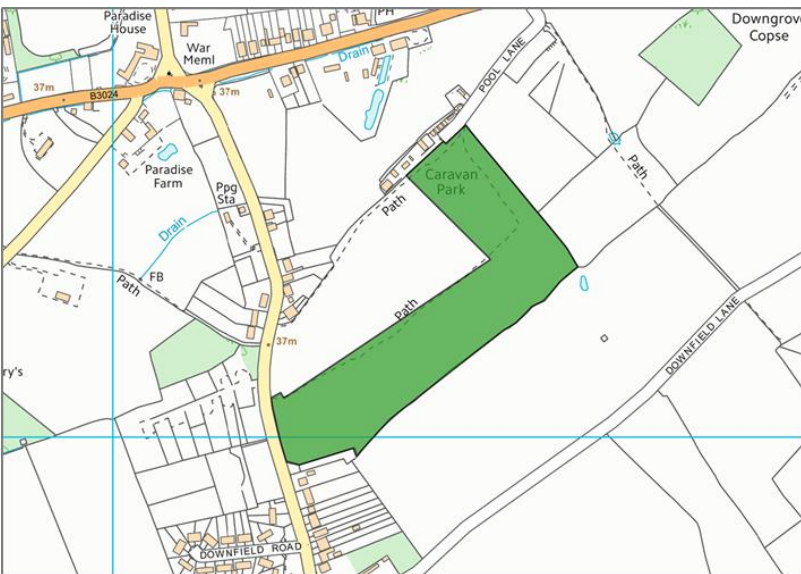
Map: Hurley Village Greens



Map: Hurley football pitch, Cricket Ground and playground



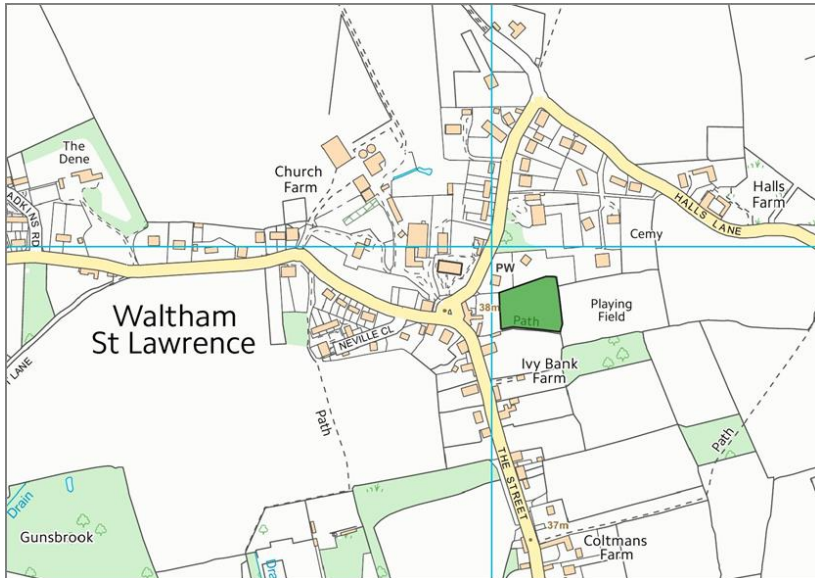
Map: Cockpole Green village green



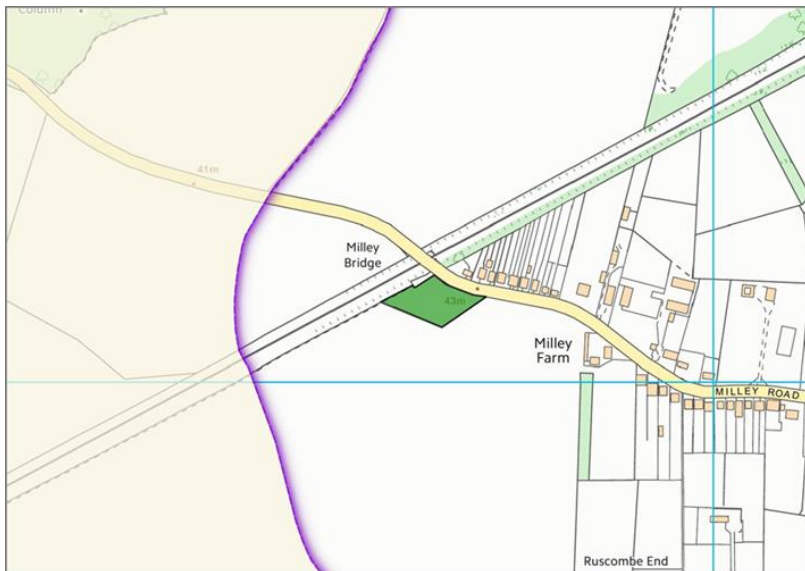
Map: Waltham St Lawrence Land adjacent to Pool Lane



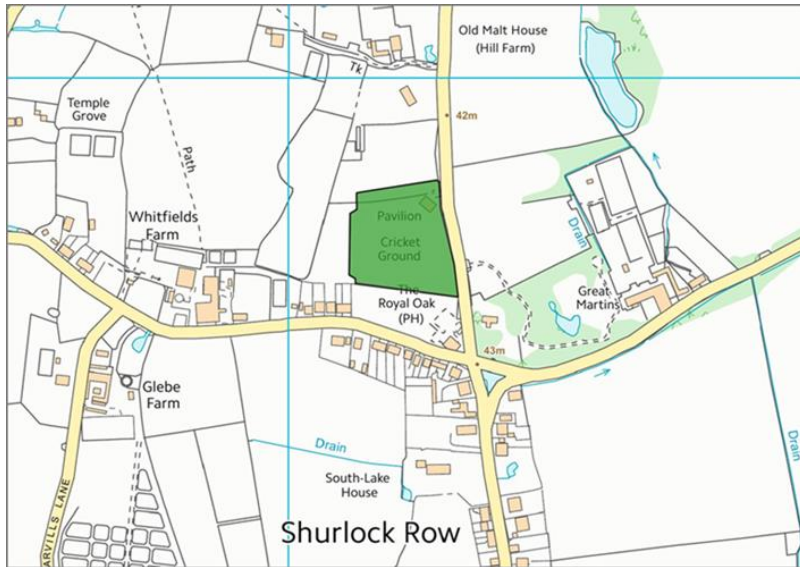
Map: WSL West End, land behind Primary School



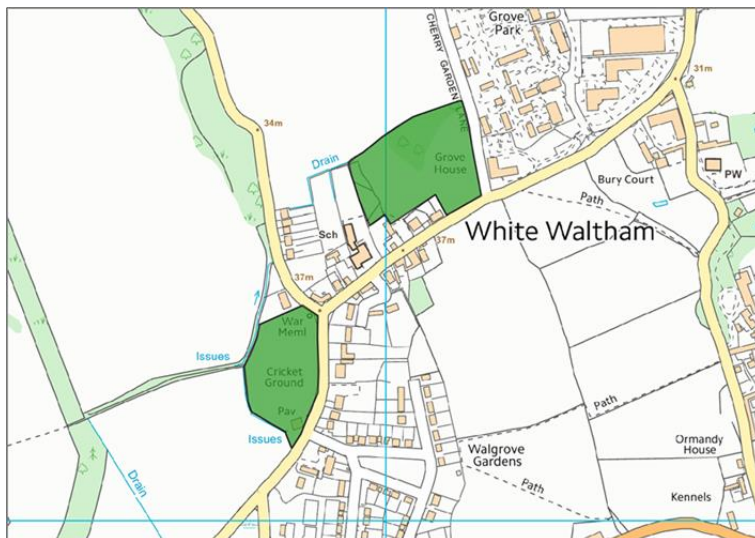
Map: Waltham St Lawrence Land behind Bell Inn



Map: Waltham St Lawrence land by Milley Bridge



Map: Waltham St Lawrence land at Yeo Memorial Ground, Shurlock Row



Map: White Waltham Cricket Ground and Waltham Grove Park



Map: WW Phipps Close Play Area



Map: WW land off Breadcroft Lane



Map: WW Littlewick Green: Village green/ Cricket ground and Littlewick Common

Transport Policies: Accessibility, Highways Safety and Parking

Policy T1: Accessibility and Highways Safety

Development proposals requiring access must demonstrate safe and suitable access; and development proposals that would have severe residual cumulative impacts on highway safety will be refused.

3.30 Within the HWNP area transport safety and traffic issues are one of the greatest concerns particularly given the proximity to the M4, the A404M and Maidenhead Railway Station. These all represent one of the biggest commuter zones in the country. The impact of future development in addition to the opening of the Crossrail link at Maidenhead is likely to be significant but cannot be measured at this time.

Policy T2: Goods Vehicle Traffic

Development generating additional HGV/LGV traffic movements should ensure that any harm arising from noise and dust is satisfactorily mitigated.

Evidence from the consultations indicates that there are particular areas in the HWNP that are detrimentally impacted by noise and congestion from current levels of HGV/LGV traffic, these include Woodlands Park and Knowl Hill at Star Lane.

4. IMPLEMENTATION

4.1 The Neighbourhood Plan will be implemented through a combination of the local planning authority's consideration and determination of planning applications for development in the parishes, and through steering public and private investment into a series of infrastructure proposals contained in the plan.

Development Management

4.2 Most of the policies contained in the Plan will be delivered by landowners and developers. In preparing the plan, care has been taken to ensure, as far as possible, that the policies are achievable.

4.3 Whilst the local planning authority will be responsible for development management, the Parish Councils will also use the Plan to frame their representations on submitted planning applications. They will also work with the Royal Borough to monitor the success of the policies.

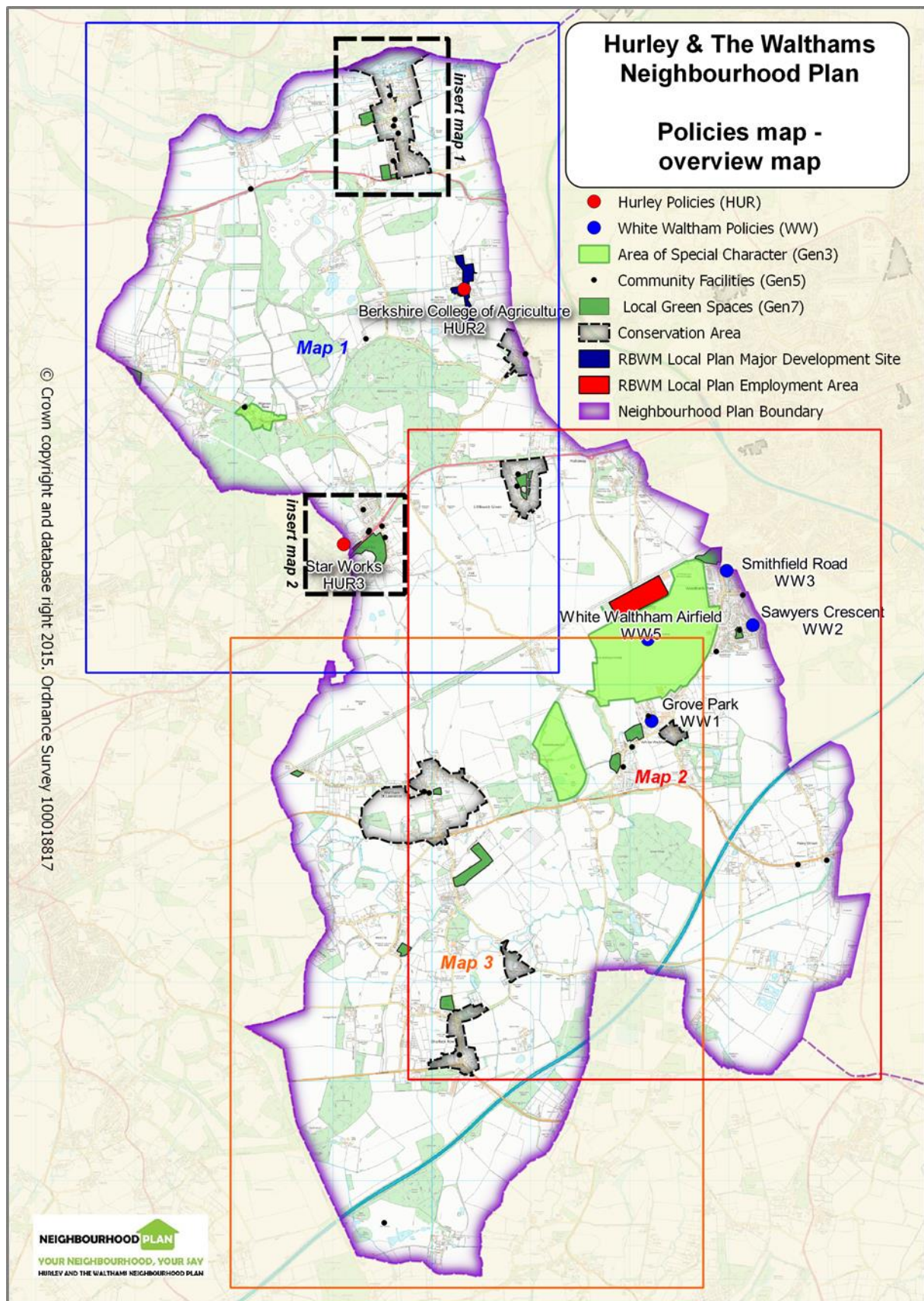
Infrastructure Projects

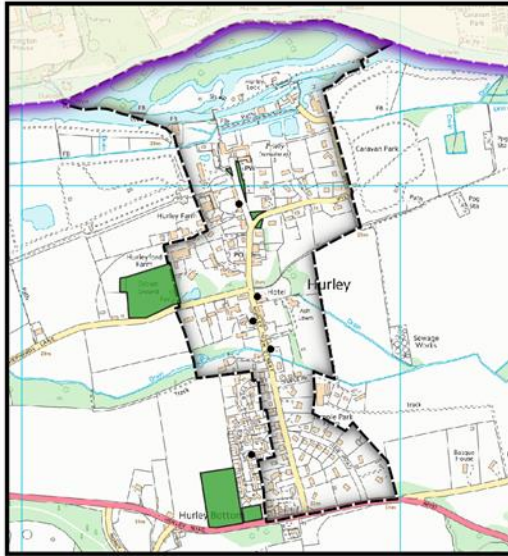
4.4 The Parish Councils propose some or all of the following projects for investment of future Community Infrastructure Levy funding allocated by the local planning authority and to the Parish Councils:

- Sustainable drainage schemes
- Traffic mitigation schemes
- Enhancements to rights of way
- Playground provision
- Education facilities and school playing fields

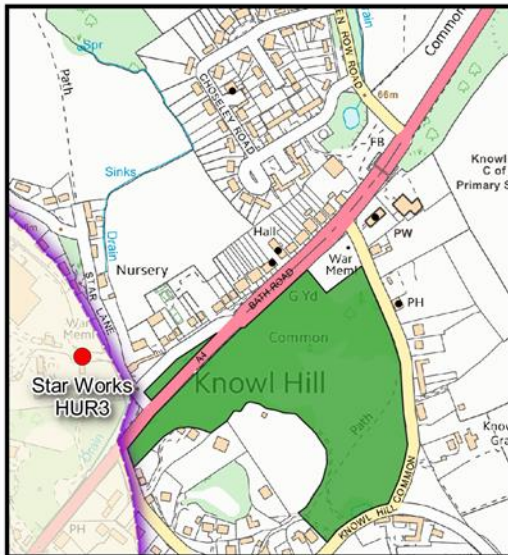
This series of local infrastructure projects will be prioritised for investment from the Royal Borough's Community Infrastructure Levy (CIL) in due course. The CIL will replace the pooling of more than four S106 agreement financial contributions towards a single infrastructure project during the plan period. It will be charged on qualifying residential and commercial development. A minimum of 25% of the levy collected from development in the Parishes will be passed to the Parish Councils for investment in the Parishes. The policy provides the local community with an indication of the priorities for investing the fund to improve local infrastructure as a result of new development in the parishes.

5. POLICIES MAPS





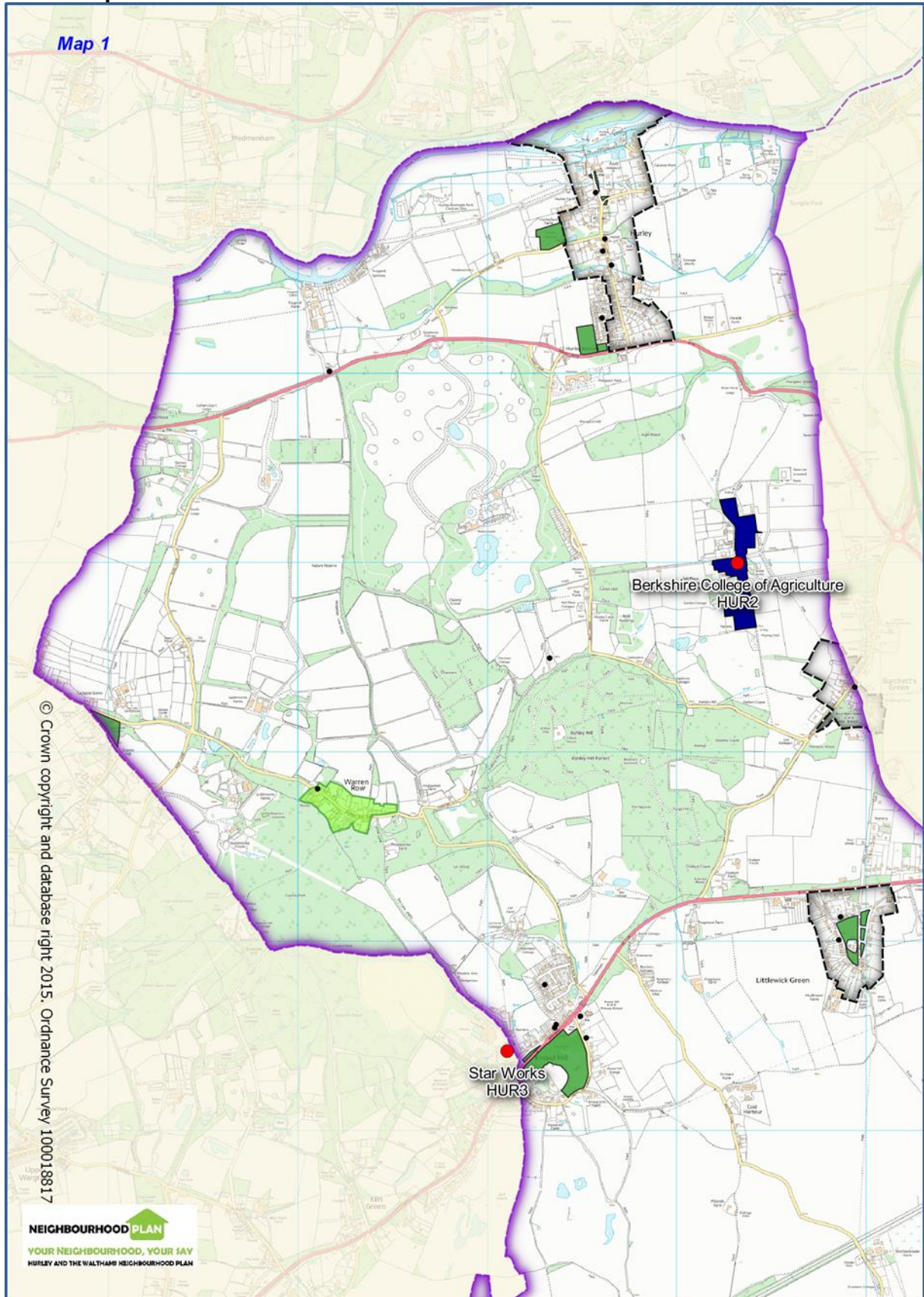
insert map 1



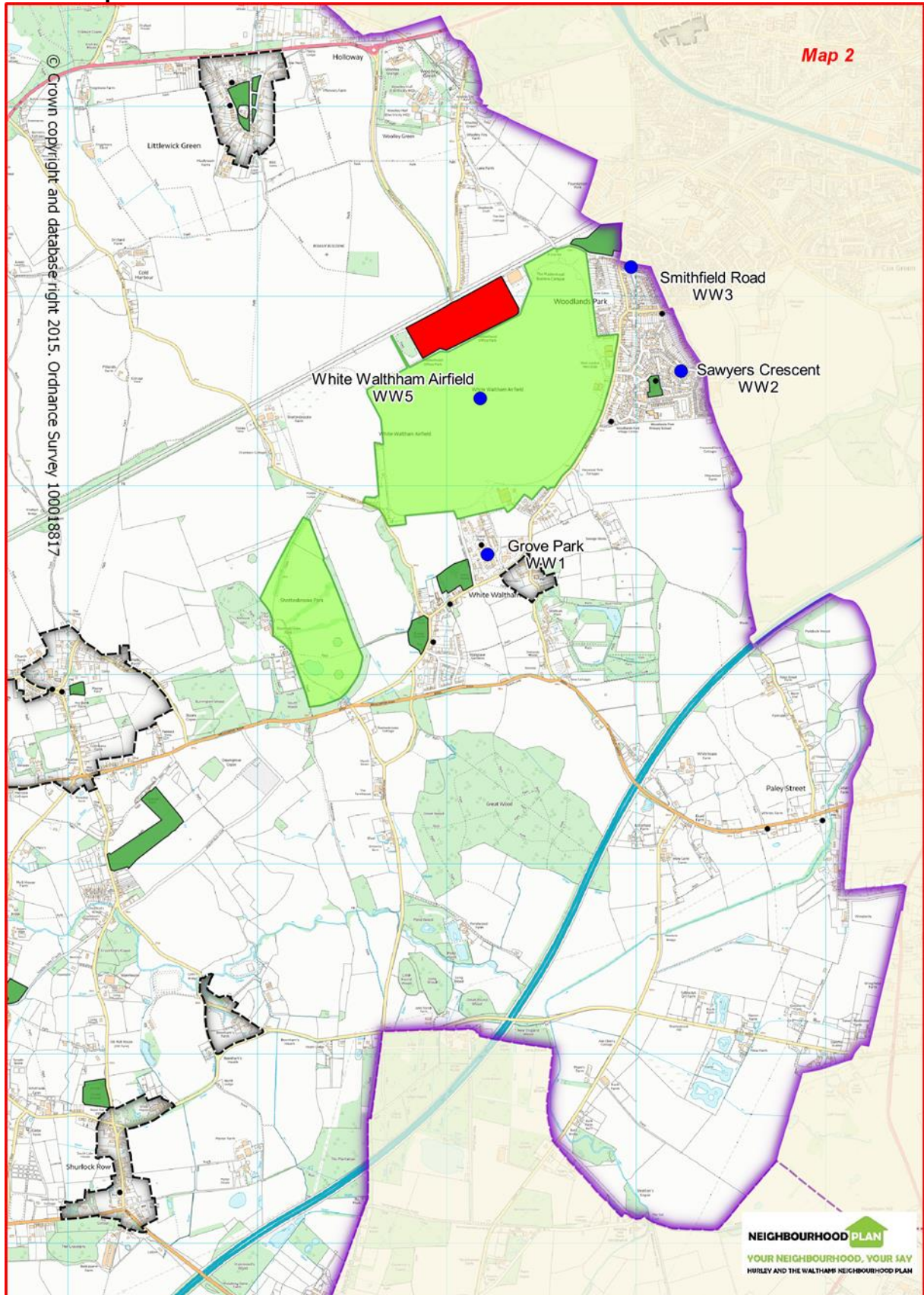
insert map 2

- Hurley Policies (HUR)
- White Waltham Policies (WW)
- Area of Special Character (Gen3)
- Community Facilities (Gen5)
- Local Green Spaces (Gen7)
- Conservation Area
- RBWM Local Plan Major Development Site
- RBWM Local Plan Employment Area
- Neighbourhood Plan Boundary

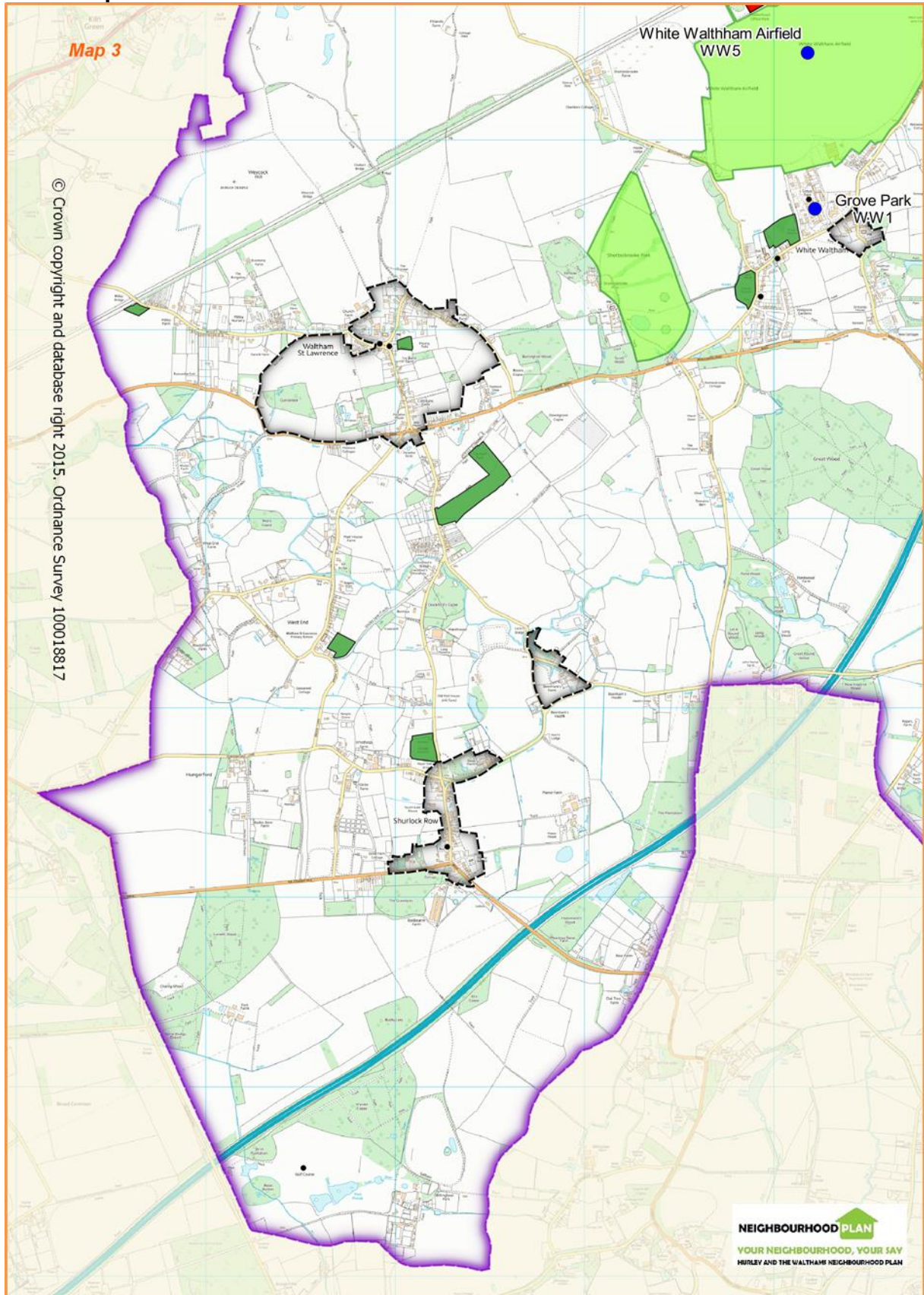
Inset Map 1:



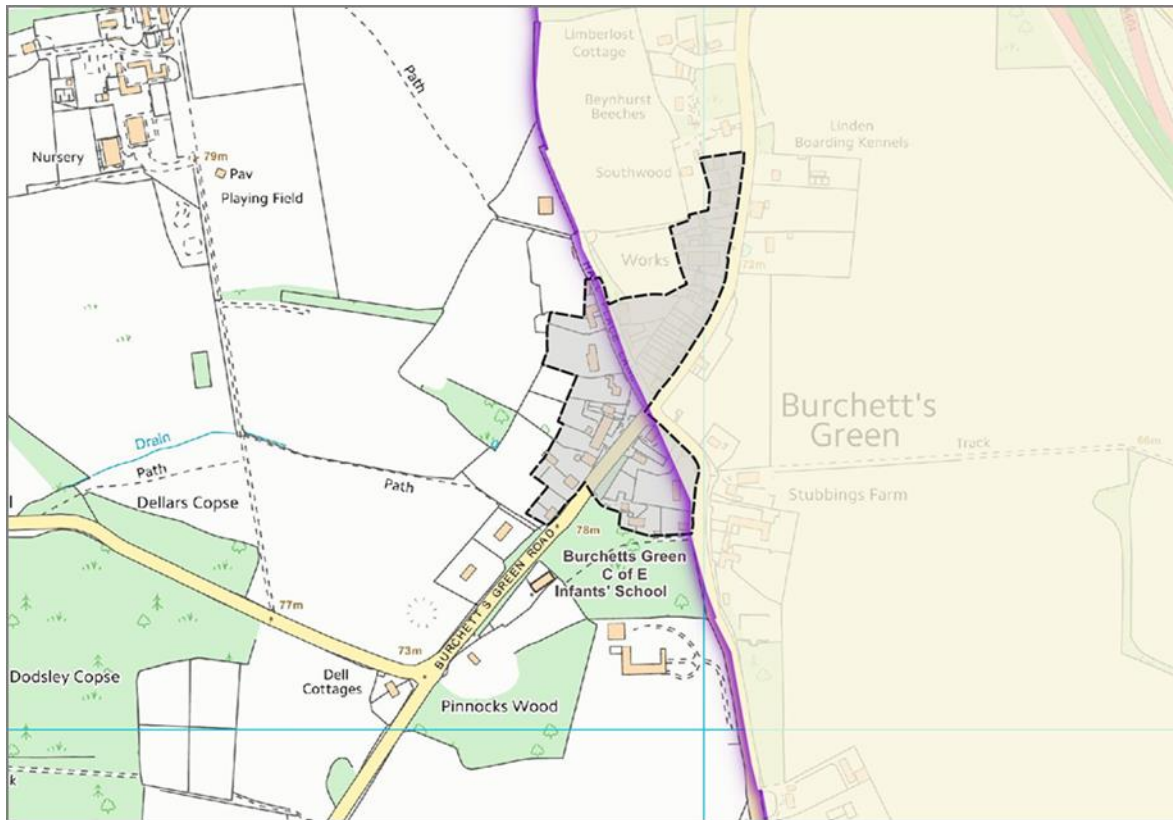
Inset Map 2:



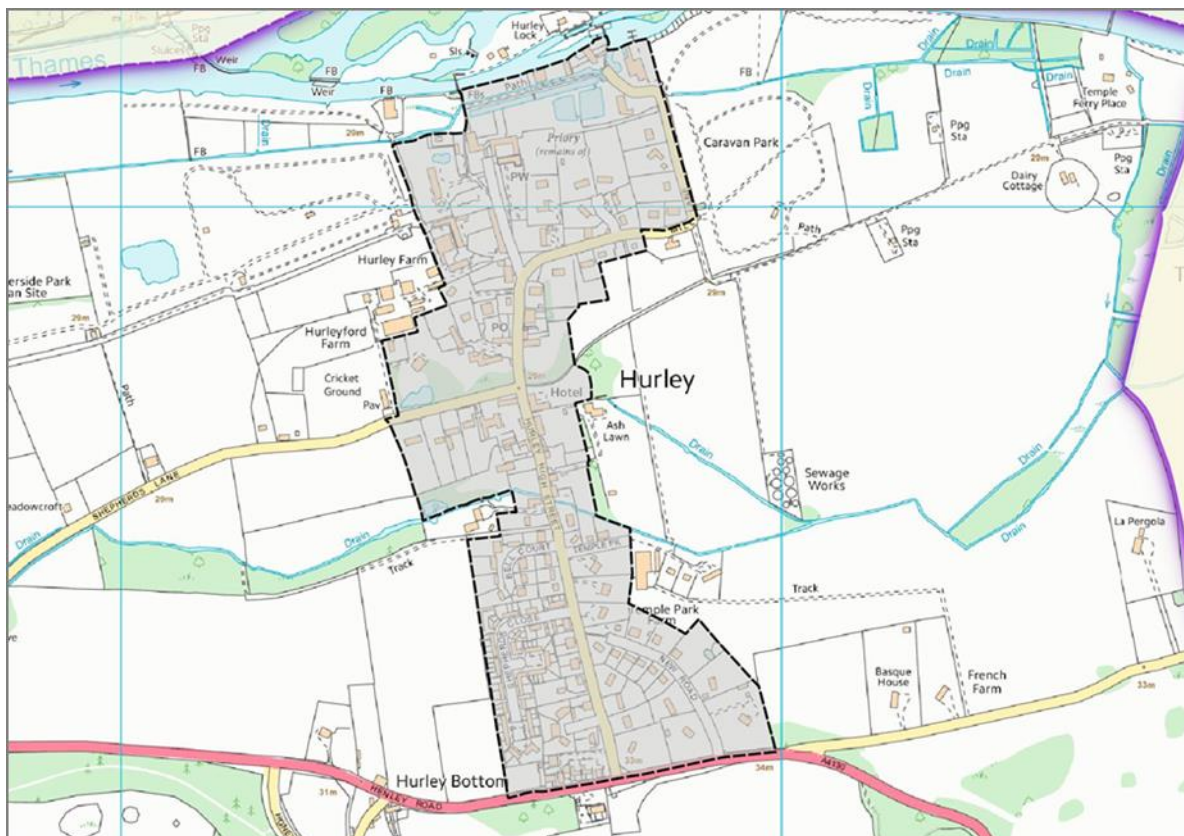
Inset Map 3:



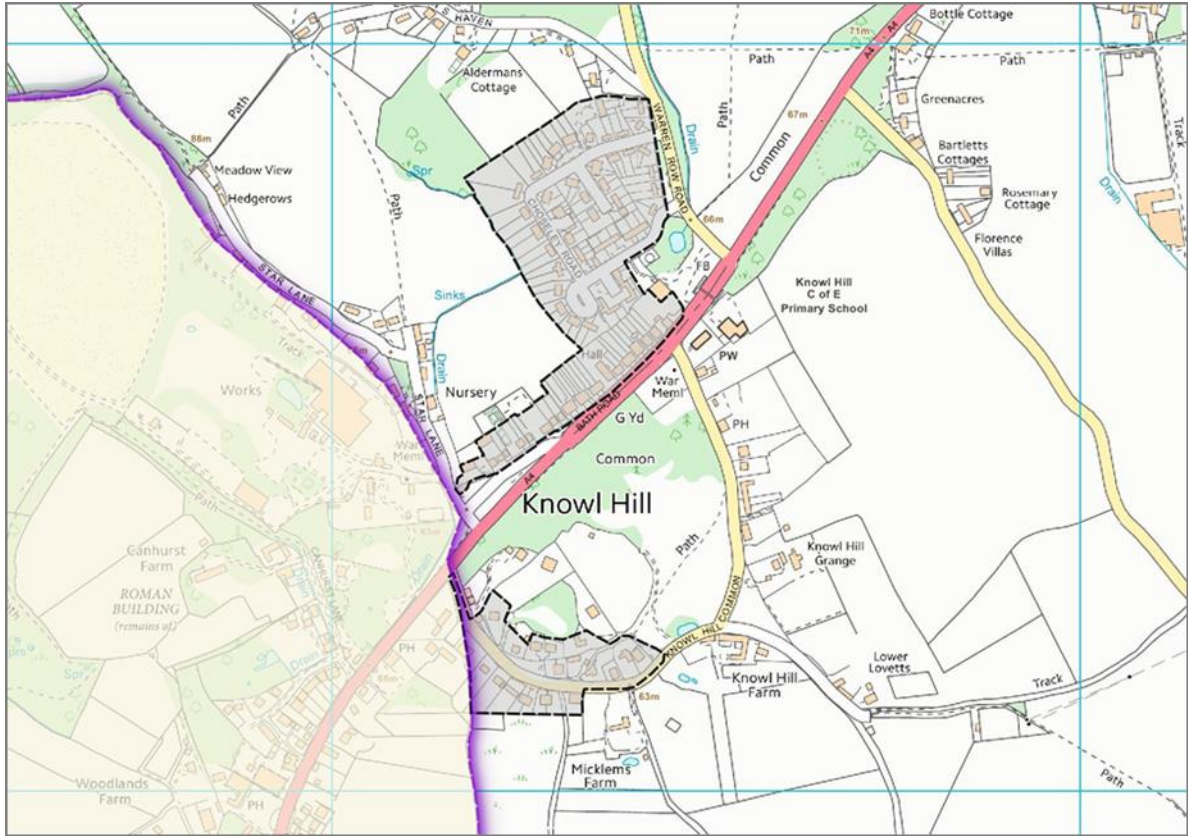
6. RECOGNISED SETTLEMENT BOUNDARY MAPS



Burchetts Green



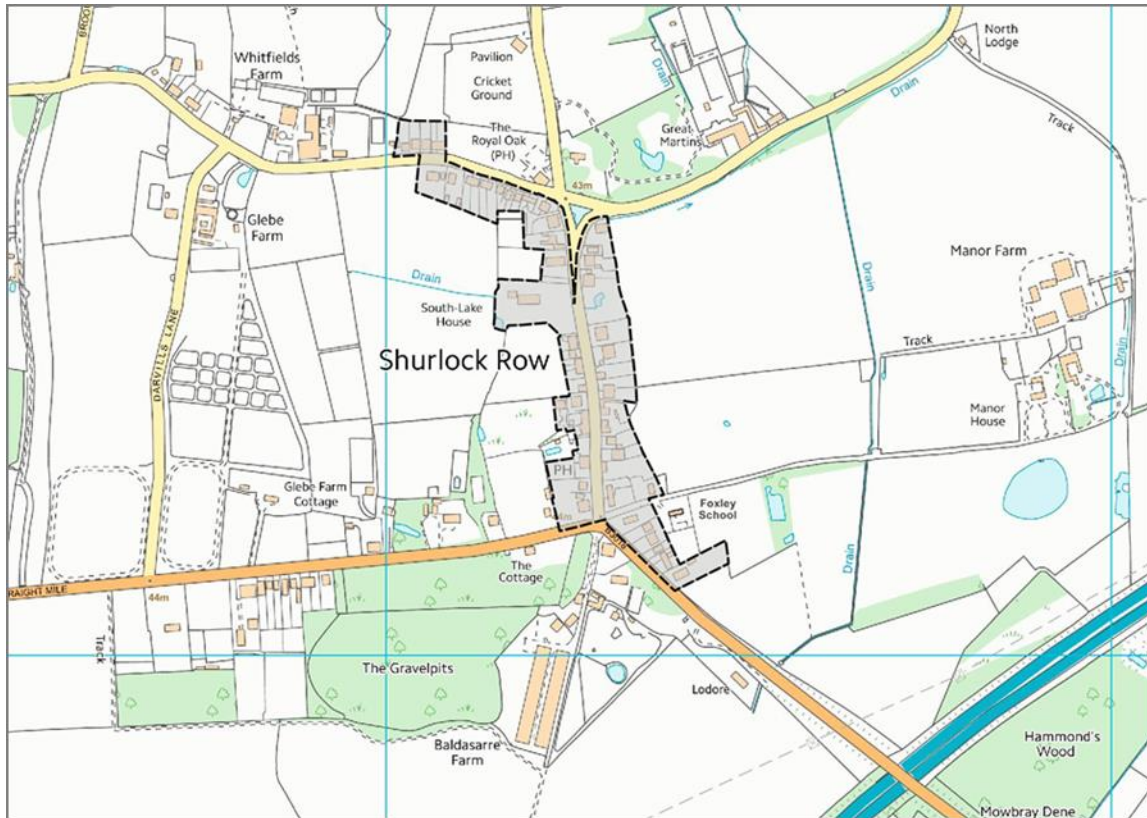
Hurley



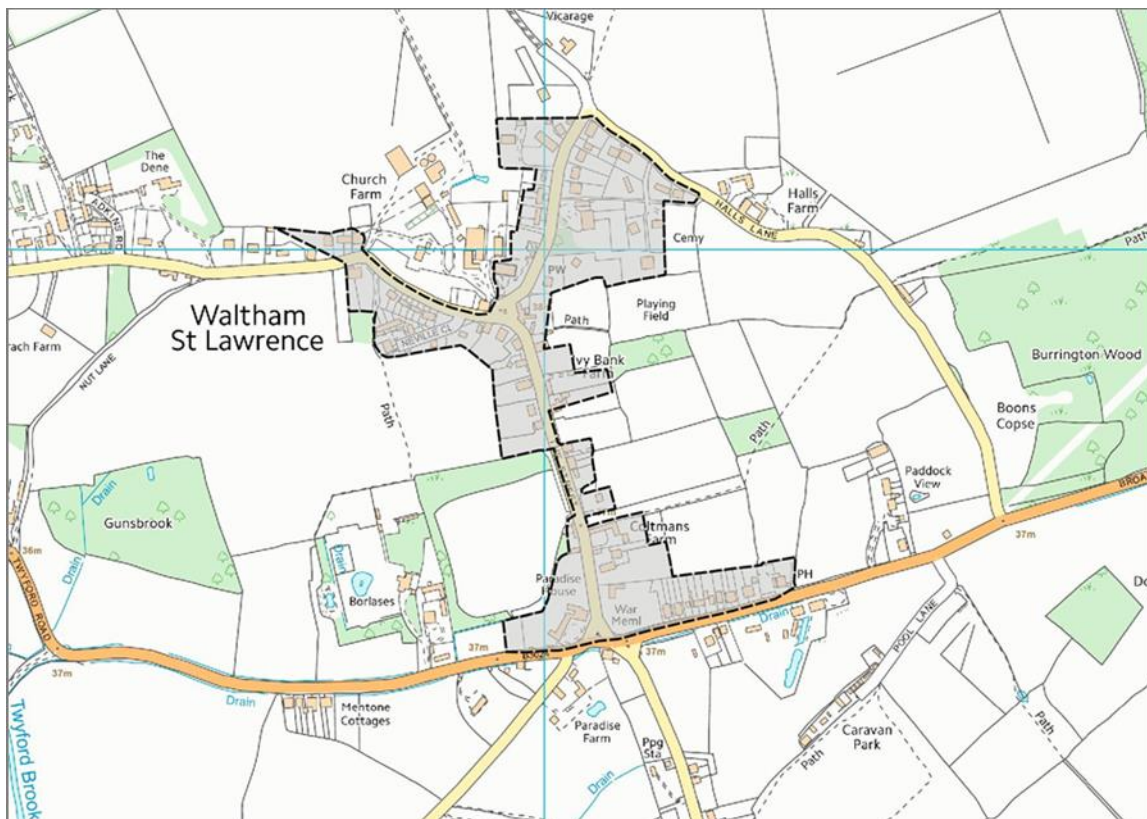
Knowl Hill



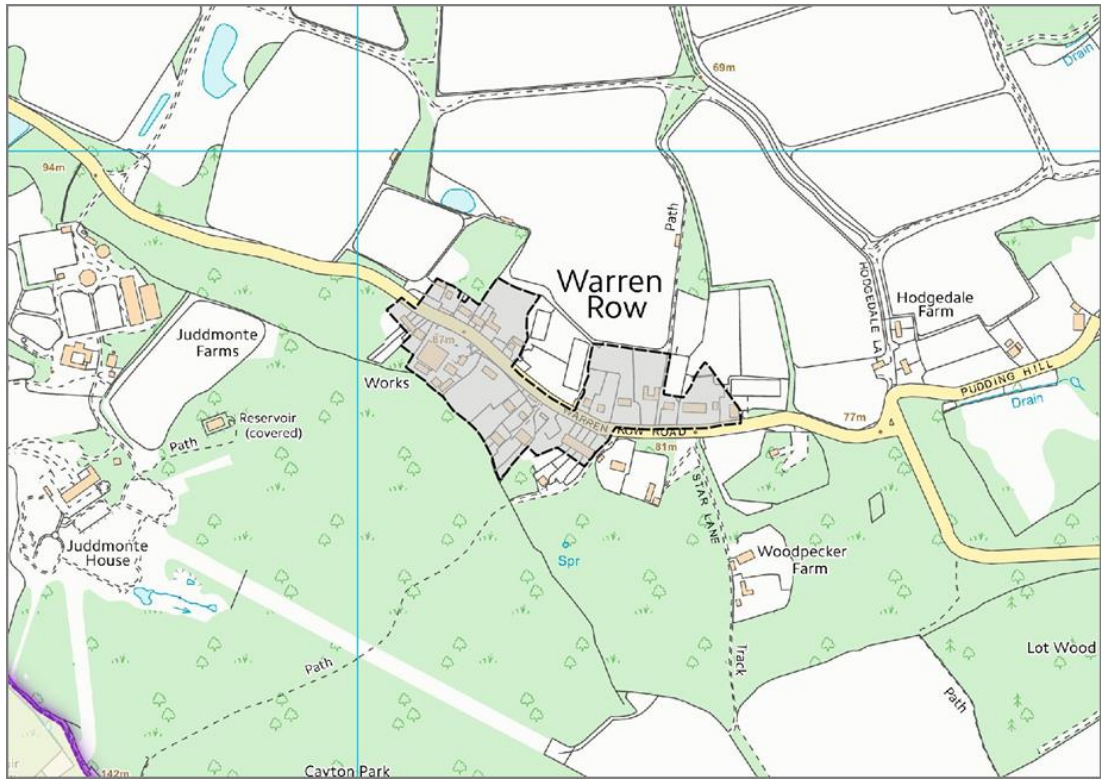
Littlewick Green



Shurlock Row



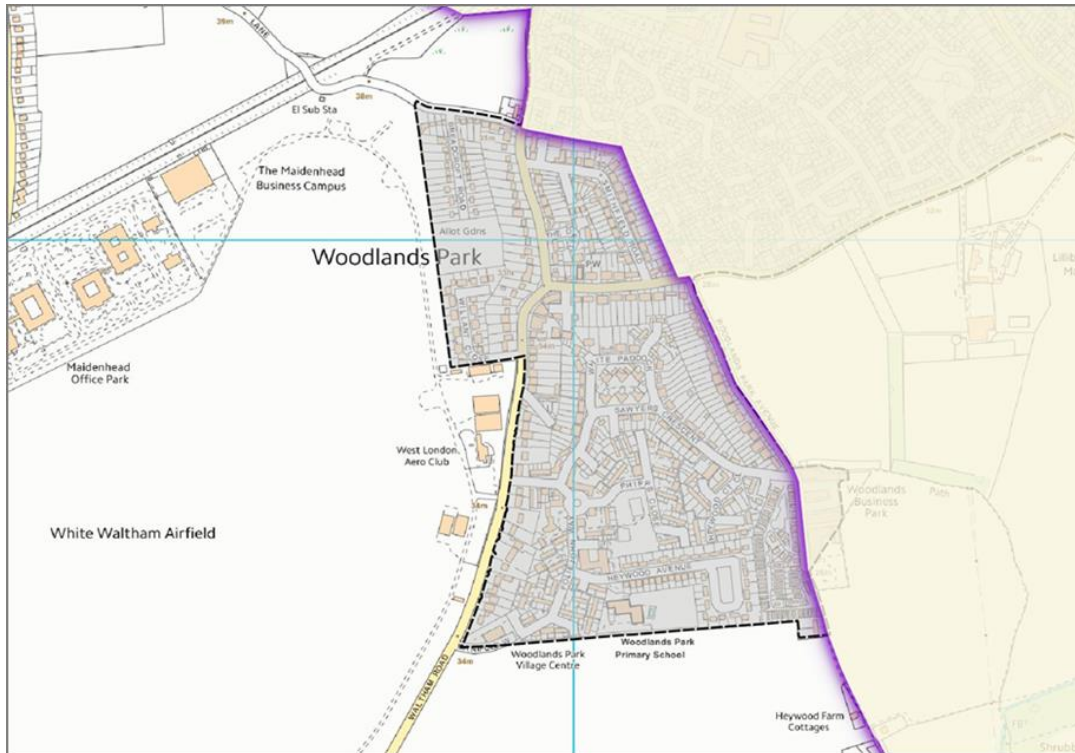
Waltham St Lawrence



Warren Row



White Waltham



Woodlands Park

ACKNOWLEDGEMENTS

The journey from the start to the compilation of the final draft of this Neighbourhood Plan was not without difficulties. There are so many thanks to be given to all our volunteers who gave of their time and assistance and were a huge help in bringing to fruition this draft plan that it is too numerous to mention here all their names individually - but to all those volunteers, please accept our very grateful thanks. Without the community coming together as they so willingly did, our plan would still be in its infancy.

However, mention should be made to those who were approached for help and enthusiastically came forward to give their services voluntarily.

Joe Staunton – As Vice Chairman, Joe has been without doubt the ‘right hand man’ and the one to go to when anything has to be done. And there has been so much to be done. He has been a constant source of support, inspiration and advice.

Bob Anwyl-Hughes – Secretary for the Neighbourhood Plan Group and also Treasurer. Without Bob’s sterling work taking the minutes at each Steering Group meeting and ensuring the minutes are sent on time, and his advice to all our questions, we would have found it very difficult to continue. Our grateful thanks also for Bob’s professional attention to detail in the accounts.

Nick Flook – for his knowledge of the Web, setting up our website and updating the site each month.

Warren Richmond from Hurley – who compiled and printed the Project Plan and attended many Steering Group meetings with presentations to keep us on track and without which we would have had great difficulty moving forward.

Jos Christaloudou from Waltham St Lawrence – who did all our design and artwork. Jos attended the Steering Group meetings and gave design briefs to ensure we had encapsulated the image we wanted for our consultation posters, letter heading, cards, the survey and of course our logo.

Claire Pickles from Paley Street – who was our Project Plan Coordinator. Claire kept us on track, which was often a difficult and arduous task and attended many Steering Group meetings and also coordinated our eight Consultation Events.

Toni Rae from Paley Street – who was the Lead for Communications. Toni organised the Communications Team – volunteers from all the villages in our Ward – to ensure posters advertising the Consultation Events were put up around the villages and to ensure residents were aware of The Neighbourhood Plan.

Adrienne Yentis from Knowl Hill – who gave her expert advice on presenting and writing the survey and continued advising on the formulation of questions.

The Communications Team – all our residents on this team who were out and about in their villages and attending the Consultation Events to answer any questions from residents.

The Village Associations, Village Society and Preservation Society for all their input.

The Editors of the Local Magazines – who were so helpful giving free advertising for the Neighbourhood Plan.

And the many more residents involved across the Ward for delivering Neighbourhood Plan information, helping at Consultation Events and coming forward, to help in any way they could.

The Topic Group Chairmen– Cynthia Pittaway, Vinnie McCann, Peter Fieldhouse, Pat Macdonald, Paul Martin, and Arlene Kersley **and their teams** - without their involvement and work compiling all the statistics and knowledge of the areas in the Ward relevant to their Topic Group there would be no Neighbourhood Plan.

The Steering Group – for their commitment to the community and the numerous hours undertaken to produce the Neighbourhood Plan – Joe Staunton, Sandra Baker, John Birkett, David Burfitt, Nick Flook, Jane Gunnell, Steve Harrington, Linda Jones, Arlene Kersley, Vinnie McCann, Keith Robinson, Heather Scott, Clive Scott-Hopkins, Jane Durgan, June Brayne and Des Warren.

And finally mention and thanks must be made to:

The Clerks of the Parish Councils who have given so much support and assistance whenever we have asked

The Parish Councils who in the interest of and to reflect their Parish, have painstakingly gone through each page of the draft Neighbourhood Plan prior to giving their approval and agreement.

The Royal Borough of Windsor and Maidenhead for their help and for ensuring officer attendance at our Steering Group meetings to give guidance. Phillip Gill and Ian Bellinger were instrumental during the initial stage of gathering together all those residents interested in a Neighbourhood Plan and setting up the Neighbourhood Plan Group. Thanks also go to them for attending those many long evenings at our Steering Group meetings. Particular mention must also be made of Rebecca Williams who now attends our meetings and has given valuable advice in excess of what was required.

Arlene Kersley from CCB (Community Council for Berkshire) whose help has been instrumental in producing the Neighbourhood Plan. With her knowledge of policy legislation and expertise on the computer, Arlene has been the most influential member of the Steering Group from the survey to the production stage of the plan and in gaining a government grant towards our plan. She introduced a consultant to guide us on writing policies and has underwritten all our work with presentations at each stage of the draft plan.

Our consultant, Neil Homer of **rCOH**, for his advice and assistance in preparing the draft Neighbourhood Plan.

APPENDIX 1: Areas of Special Character Study

The Neighbourhood Plan designates the following areas as Areas of Special Character, as shown on the Policies Map:

Hurley Parish:

Warren Row



Warren Row is a hamlet of some sixty dwellings set on either side of a quiet country road bounded by bluebell woods to the south with open views stretching to the Chiltern Hills in the north. In the centre of the village is The Snooty Fox, a pleasant pub that acts as a centre for village socializing. St Paul's Church (a late 19th century prefabricated mission church of the 'Tin Tabernacle' type) is an unusual building, erected in 1894 that is finished on the exterior in green corrugated iron. The village

has some groups of pretty terraced cottages as well as larger detached properties. Many public footpaths radiate from the village, and to the north, is the working stud farm of Juddmonte. On the south side of the village is the entrance to a network of tunnels, used in WW2 as an underground factory producing aircraft components. Later, during the Cold War, it was maintained by the Ministry of Supply as a Regional Seat of Government. It is now a depository for a wine merchant and provides archiving storage for commercial clients. This rural community does not have the status of a Conservation Area but is typical of a quiet country village (of which there are only a few in east Berkshire) in need of protection from overdevelopment.

Shottesbrooke Parish:

Shottesbrooke Park



A private, old established rural park belonging to Shottesbrooke House (grade 2* listed, dating from the 16th century with later alterations), with St John the Baptist church (grade 1 listed, 14th century) adjacent and a collection of other buildings and structures (some also listed) that include the offices of the Landmark Trust.

The parkland is mainly grass but with a small lake and several avenues of mature trees radiating from the house, as well as other considered planting. The grass is often grazed by sheep.

The park is crossed by a bridleway (north to south) and a footpath (east to west) both of which have delightful views of the house and church and which understandably are popular. With public access at four separate points it is and has

been regularly used by local people for walking, riding and cycling over many years. These connect to the extensive public rights of way network beyond the park.

Although there is no known present threat to the character of the park, it being classed as an Area of Special Character should help ensure that any future developments are carefully considered with this wider role in the community in mind.

White Waltham Parish:

White Waltham Airfield



The airfield was the headquarters of Air Transport Auxiliary from February 1940 until 30th November 1945. It was from here that all the operational work needed to organise the task of ferrying RAF and RN warplanes between factories, maintenance units and front-line squadrons took place, i.e. all the planning and logistics needed to recruit and organise the activity of the 1,245

men and women from 25 countries who ferried a total of 309,000 aircraft of 147 different types, without radios, with no instrument flying instruction and at the mercy of the British weather. White Waltham is still widely regarded as the spiritual home of ATA.

Consequently, any building still remaining on the airfield to represent this important heritage should be protected when considering development applications in accordance with our Policy 3 statement concerning the Airfield. The main clubhouse and administrative building (an original wartime structure), plus remaining original hangars, fall in this category.

APPENDIX 2: Community Facilities Detail

(as identified on Policies map)

Hurley Parish Facilities:

Black Boys Public House, Black Boy Lane, Frogmill, Hurley, SL6 5NH/ SL6 5NQ



The Black Boys Inn dates back partly to the 16th Century. It is situated near the western boundary of Hurley Parish and at the entrance to the riverside hamlet of Frogmill. This picturesque beamed public house is an important centre for locals to take friends and visitors. The Inn is within easy walking distance of the large riverside touring park. It is a building well worthy of preservation.

Hurley Doctors' Surgery, 6 Shepherds Close, Hurley, SL6 5LY

The doctors' surgery is situated in Shepherds Close. It is a satellite surgery to the Marlow Practice and is open twice per week. The surgery is well used especially by the large number of elderly residents who are unable to drive and therefore is an essential asset to the village that must be preserved.

Hurley Village Hall, High St, Hurley, SL6 5LT

The Village Hall is situated in the centre of Hurley Village and is run as a Charity by the Hurley Village Association. It is the centre of village social life, being used by many local village societies and groups for such events as the village pantomimes, quiz nights, Pilates, dancing classes, Hurley Fete, etc.

Hurley Farm Shop, High St, Hurley, SL6 5NB

The shop is the only food shop in Hurley Village and is an essential centre for those who cannot easily get out of the village to main shopping centres. It is also an essential for customers of the locally based holiday caravan parks and the many visitors to the village.

Rising Sun Public House, High St, Hurley, SL6 5LT

The Rising Sun is the centre for casual socializing in the village. It is also important as the local restaurant used not only by local residents but also for casual trippers and caravanners who need to be able to walk rather than drive when they have a drink. The pub also supports all local events supplying drinks and often food to such local events as the Regatta, Village Fete, Village Quiz, Parties, etc.

Ye Olde Bell, High St, Hurley, SL6 5NB



Hotel and Restaurant in the heart of the village. Claims to be the oldest inn in England built in 1135 to accommodate visitors to Hurley Priory. It is a well-known national landmark. Listed as 2* and has all the features of an ancient ale house. The adjacent Malt House, part of the Old Bell complex, is also an important feature of the village scene. Across the High Street, the Conference Barn and Brick Barn, again part of the Olde Bell complex, are set around the large car

park, which also add to the ambience and openness of this area at the centre of the village. All are essential to the village street scene.

The Dew Drop Inn, Honey Lane, Hurley, SL6 6RB



This attractive public house in the heart of Ashley Hill Forest is very popular with summer walkers. It has attractive views across the Thames Valley. The building was once an important 'watering hole' for workers in the forest and has lovely old beams and open fires in the winter.

The Crown Public House, Burchetts Green Road, SL6 6QZ



The 19th century building dominates the centre of Burchetts Green due to its prominent position and is fundamental to the character of the hamlet. The Crown is now run as a combined pub/ restaurant and is at times used for community events.

Royal Oak PH, Knowl Hill Common



The Royal Oak is a small and friendly public house well used by local residents for social and community events. It is now the only pub open in Knowl Hill and as such would be a significant loss to the community if it were to close. It has a field to the rear which is used for village events such as harvest festivals and fundraisers as well as private functions. It also hosts a monthly get together to which all residents are invited.

Knowl Hill Village Hall, Bath Road, Knowl Hill



The village hall is an attractive, medium sized hall with kitchen, committee room and good parking facilities which is well used by local residents and organisations such as Guides, W.I., parish council and a wide variety of clubs as well as outside organisations such as cycle clubs, dog training clubs, music societies etc. It is a focal point of social contact valuable for the whole community and in particular older people and hosts a wide variety of fundraising

and social events including for St. Peter's Church and the Knowl Hill Village Association.

Doctors' Surgery, Bath Road, Knowl Hill

Next door to the village hall is a dedicated doctors' surgery run as a branch by the practice based in Wargrave. It is well used by residents, particularly older people without transport and is an invaluable amenity for all. It benefits from the shared use of the village hall car park. Prescriptions can be collected from Choseley Road Stores.

Choseley Road Stores, Century Chase, Choseley Rd, Knowl Hill, RG10 9YQ

Choseley Road Stores is situated at the centre of the Choseley Road estate. It is a valuable local amenity for all, particularly for older people who do not have transport. It is a well-stocked general store and provides a collection point for prescriptions.

Snooty Fox, Warren Row Road, Warren Row, RG10 8QS



The Snooty Fox is the only pub/restaurant in Warren Row and is well used by families, residents and walkers. It provides an attractive and welcome stopover for residents and passers-by in car and on foot.

Waltham St Lawrence Facilities:

Neville Hall Village Hall, Milley Road, RG10 0JX

Originally a 16th century cottage extended later as village school, now used as hall for village functions, doctors' surgery, weekly post office and band HQ; the Parish Council act as trustees.

Bell Inn, The Pound, RG10 0JJ



Early 15th century wealden style house grade 2 listed with star status, given to the village over 400 years ago by the printer to Queen Elizabeth 1, owned by charity trustees who distribute to worthy local causes.

Shurlock Inn, The Street, Shurlock Row, RG10 0PS



Originally known as the White Hart, the Shurlock Inn was saved as a village facility by local subscribers and is run as a combined pub/restaurant.

Billingsbear Park Public Golf Course, The Straight Mile, Wokingham, RG40 5SJ

White Waltham Parish Facilities:

- i. Holly Cottage, SL6 3SG**
- ii. The Beehive Public House, SL6 3SH**
- iii. The Royal Oak Public House, SL6 3JN**
- iv. Bridge House Public House, SL6 3JS**
- v. The Cricketers Public House, Littlewick Green SL6 3RA**
- vi. Woodlands Park Village Centre, SL6 3GW**



- vii. Woodlands Park Surgery, SL6 3NW**
- viii. Gilchrist Thomas Village Hall, Littlewick Green, SL6 3RF**

APPENDIX 3: Local Green Space Designation Justifications

Hurley

Knowl Hill Common:

Knowl Hill Common is a local beauty spot comprising a hill from the top of which can be viewed the countryside for miles around. It is a tranquil and very pleasant site much enjoyed by families for games and picnics, dog walkers and horse riders. It backs onto beech woods covered with bluebells and other wild flowers in the Spring and provides a natural barrier against the noise and traffic of the A4. It is a recreation amenity for the surrounding houses as well as the wider village and others. The adjoining wood and pond, which is thought to be a horse pond, support wildlife including deer, ducks and moorhens.

Land North A4 Knowl Hill Opposite Knowl Hill Common

Located between the A4 and the original London to Bath Road the green enables parking for walkers and local businesses. This small parcel of green provides a popular local meeting point for walkers and cyclists who make use of National Cycle Network route 4 and woodland footpath up Bowsey Hill. Commonly known as the 7 Stars, the location is a landmark identified on pathfinder maps of the area. It was until recently the location of a popular pub that is now closed down, and due to be converted into housing. The green also represents an important green focal point marking the entrance of the Knowl Village that sets the character of the village. The green prevents development on the north side of the A4 from becoming strip-like in appearance and acts as a green buffer zone between the residential and commercial buildings and the A4. It defines the village to traffic passing through and has historic significance in that it is reputedly a place where hangings of highwaymen were carried out (once known as Hangman's Common) and also where prize fighting took place.

Hurley Village Greens: adjacent to Village Shop SL6 5NB and Mill Lane SL6 5ND.

The Village Greens, in the heart of the village of Hurley, are the main feature of the northern end of the village. They are surrounded by ancient buildings including the Church; ancient Tithe Barn (now Tythecote Manor); a second flint and chalk tithe barn; village shop and other old houses. The four Greens are part of the Waste of the Manor of Hurley and are now owned by the villagers through the Village Association, with one portion owned by the Hurley Church. These attractive Greens are all surrounded by posts and chains, making this the most picturesque part of the whole village.

Hurley Cricket Field, Shepherds Lane, Hurley

Managed under licence from local landowner. Important open space to west of village centre. Many young children are coached here and play in colts teams in local leagues.

Hurley Playground, Henley Rd, Hurley and Shepherds Close Hurley.

Only playground in Hurley. Used by many children from the Shepherds Close area and elsewhere in the village. An important source of recreation for many houses with small gardens.

Hurley Football Field, Henley Rd, Hurley

Adjacent to playground. Managed under annual licence from local farmer. Used by some villagers on a regular basis in local area football leagues.

Cockpole Village Green, Cockpole Green (Hurley) - Cockpole Green is a small hamlet of some 40 houses, some 25 of which are situated in the Parish of Hurley. Approximately half of these properties are adjacent or overlooking a very attractive open area of rough grassland common and trees. The Common is often used for village events and is otherwise available to residents and visitors alike for air, exercise and recreation. The hamlet has several old properties which have been sympathetically renovated and many have open farmland. It is separately identified to the village of Crazies Hill which has a common boundary, the only pub, school and hall but is situated in the Wokingham Borough.

Waltham St Lawrence:

Land Adjacent to Pool Lane, Waltham St Lawrence – This 13 acres, less 1 acre earmarked by RBWM for a possible extension to the Pool Lane authorised gypsy/traveller site, is still owned by the Borough and originally intended as a 'Jubilee Wood' under the auspices of the Woodland Trust with car parking, walkways and seating proposed. This project appears now to have been abandoned which leaves the site potentially available as a community facility of which we have short supply.

Land Behind Primary School, West End - owned and run by Trustees, this 3 acre site lies behind and adjacent to the village school in West End and is available for the school and all parishioners to use as a community facility for informal activities and the occasional village fete.

Land Behind Bell Inn, Waltham St Lawrence - This area directly behind the pub is owned by charity trustees and leased to the tenants who can allow it to be used for village functions; further down the street are the parish allotments.

Land By Milley Bridge, Waltham St Lawrence - a small one acre site at the extreme north western part of our parish set aside as a football play area. It is owned by the Haines Hill Estate and leased to the parish on an annual renewable basis.

Land At Yeo Memorial Cricket Ground, Shurlock Row – Previously sited within the grounds of Great Martins at Shurlock Row this 3 acre site is formerly designated as a parish cricket ground and benefits from a purpose built pavilion (also available for functions use). The land at Oak Meadow was funded by a former resident and the Waltham St Lawrence Cricket Club goes back to 1846.

White Waltham:

White Waltham Cricket Ground - This is a major contributor to the attractiveness of the village, lying on its western edge and also on the parish boundary. On its N.E. periphery is the First World War Memorial monument. It should be protected as a sports and leisure amenity and an open space between administrative and community areas it must be protected.

Waltham Grove Park, White Waltham – This well maintained parkland which was leased to the parish council by the Shottesbrooke estate is not only a leisure, walking and fitness amenity but separates the village centre from the adjacent business park and newly allocated housing development site. As such, its protection as an open green space and civic amenity is vital.

Phipps Close Play Area, Woodlands Park – Leased from the Royal Borough by the parish council, which provides and maintains the play equipment and security installations, this open space is central to relieving and contrasting the intense housing development of the locality and provides essential leisure activity for young children.

Land at Breadcroft Lane, Woodlands Park - A natural and historical boundary between the two parishes of White Waltham and Cox Green, and a semi-rural gap between the villages of White Waltham and Cox Green. The individual communities benefit from this natural green space that protects the biodiversity of the area. Also, to lose this green space would add to the environmental pressure of the established Network Rail siding, including possible Crossrail expansion of the railway track alongside this parcel of land.

Village green and cricket ground, Littlewick Green- Central to the picturesque village, and overlooked by the majority of properties in the village, the northern cricket ground, the smaller southern area, and the eastern meadow all constitute the major part of village character and openness. Owned and maintained by the parish council and covered by village green / common land statutes and byelaws, it benefits from protected status.

NEIGHBOURHOOD PLAN

YOUR NEIGHBOURHOOD, YOUR SAY
HURLEY AND THE WALTHAMS NEIGHBOURHOOD PLAN

